

NOTICE OF PROJECT PLAN AMENDMENT PUBLIC MEETING

The City of Owosso will hold a public meeting on the proposed Clean Water State Revolving Fund (CWSRF) Project Planning Document Amendment for the proposed wastewater improvement projects at the Regular Council meeting on April 20, 2026, at 6:30 p.m. The meeting will be held in person at City Hall Council Chambers, 301 West Main Street, Owosso, MI 48601.

The proposed improvements include construction of a new wet weather pump station near the existing sanitary sewer overflow (SSO) to collect and convey excess flows, as well as an equalization basin at the Wastewater Treatment Plant (WWTP) to provide storage and treatment during peak wet weather events. The original project planning document submitted to the Michigan Department of Environment, Great Lakes, and Energy (EGLE) has been amended to include the proposed projects.

The cost of the proposed improvements is \$30,000,000. User rate increases have already been incorporated.

There are no negative long-term impacts associated with the proposed CWSRF projects. The construction activities would have only a short-term disruption.

Starting April 3, 2026, a copy of the draft combined CWSRF Project Planning Document Amendment will be available for public review on the City website at <https://ci.owosso.mi.us>

All interested parties are invited to submit written comments on the draft Project Planning document. Written comments may be emailed to Ryan Suchanek, Director of Public Services and Utilities at city.clerk@ci.owosso.mi.us. Written comments must be received no later than April 20, 2026, at 12:00 p.m., to be considered part of the public record.

City of Owosso
Wastewater Treatment Plant

Clean Water State Revolving Fund
Project Plan Amendment

Project No. 220102
April 20, 2026

*Owner Draft
Public Hearing – April 20, 2026*

**City of Owosso Wastewater Treatment Plant
Clean Water State Revolving Fund
Project Plan Amendment**

**Prepared For:
City of Owosso
Owosso, Michigan**

Public Hearing – April 20, 2026
Project No. 220102

Draft

1.0 Introduction1

2.0 Project Background1

 2.1 Study Area.....1

 2.2 Summary of Project Need1

 2.3 Existing Facilities2

 2.3.1 Average and Peak Dry-Weather and Wet-Weather Flows2

 2.4 Fiscal Sustainability Plan3

 2.4.1 Inventory of Critical Assets3

 2.4.2 Condition and Performance Evaluation3

 2.4.3 Water and Energy Conservation.....3

 2.4.4 Plan for Maintaining, Repairing, Funding, and Replacing the Treatment Works3

 2.5 Need for Project3

3.0 Analysis of Alternatives4

 3.1 Alternative 1 – No Action4

 3.2 Alternative 2 – Optimize Existing Facilities4

 3.3 Alternative 3 – Construction Alternative4

 3.4 Alternative 4 – Regional Alternative4

4.0 Principal Alternative5

 4.1 Monetary Evaluation of Principal Alternatives5

 4.2 Salvage Value5

 4.3 Escalation6

 4.4 Mitigation Costs.....6

 4.5 Partitioning the Projects.....6

 4.6 Environmental Evaluation6

 4.6.1 Implementability and Public Participation6

 4.7 Technical and Other Considerations6

 4.7.1 Infiltration and Inflow Removal6

 4.7.2 Structural Integrity.....6

 4.7.3 Sludge and Residuals.....6

 4.7.4 Industrial Pretreatment7

 4.7.5 Growth Capacity.....7

 4.7.6 Areas Currently Without Sewers7

 4.7.7 Reliability7

 4.7.8 Alternative Sites and Routings.....7

 4.7.9 Combined Sewer Overflows7

 4.7.10 Contamination at the Project Site7

 4.7.10.1 Green Project.....7

5.0 Selected Alternative7

 5.1 Relevant Design Parameters7

 5.1.1 Pump Station.....7

 5.1.2 Influent Equalization Basin8

 5.2 Project Maps.....8

 5.3 Controlling Factors8

 5.4 Special Assessment District Projects8

5.5 Sensitive Features.....8

5.6 Schedule for Design and Construction.....8

5.7 Cost Summary.....9

5.8 Authority to Implement the Selected Alternative9

5.9 User Costs9

5.10 Overburdened Community9

5.11 Project Expected Useful Life.....9

6.0 Evaluation of Environmental Impacts10

6.1 Direct Impacts.....10

6.2 Construction Impacts10

6.2.1 Project Setting.....10

7.0 Mitigation Measures10

7.1 Mitigation of Short-Term Impacts.....10

7.2 Mitigation of Long-Term Impacts.....11

7.2.1 Siting Decisions11

7.2.2 Operational Impacts11

7.3 Mitigation of Indirect Impacts.....11

8.0 Public Participation11

8.1 Public Meeting Advertisement.....11

8.2 Formal Public Meeting12

8.2.1 Public Meeting Contents12

8.3 Comments Received and Answered12

8.4 Adoption of the Project Planning Amendment12

List of Tables

Table 1 – Monetary Evaluation5

Table 2 – Design and Construction Schedule.....8

Table 3 – Proposed Project Cost Summary9

Table 4 – Project Expected Useful Life9

List of Figures

- Figure 1 – Sanitary Sewer Service Area
- Figure 2 – WWTP Site Plan and Proposed Equalization Basin
- Figure 3 – Proposed Pump Station Location

List of Maps

- Map 1 – Environmental Contamination
- Map 2 – Wetlands and Major Surface Waters
- Map 3 – FEMA Floodplain
- Map 4 – Soils

List of Appendices

Appendix 1 – Monetary Evaluation and Present Worth Analysis

Appendix 2 – ACO

Appendix 3 – Resolution – Water and Sewer Rate Schedule

List of Abbreviations/Acronyms

ACO	Administrative Consent Order
AMP	Asset Management Plan
CBOD ₅	Five-Day Carbonaceous Biochemical Oxygen Demand
CIP	Capital Improvement Plan
City	City of Owosso
CSO	Combined Sewer Overflow
CWSRF	Clean Water State Revolving Fund
EGLE	Michigan Department of Environment, Great Lakes, and Energy
EQ	Equalization
FEMA	Federal Emergency Management Agency
ft	feet
FY	Fiscal Year
gpm	gallons per minute
hp	horsepower
I/I	Infiltration and Inflow
in	inch
ITA	Intent to Apply
MG	million gallons
MGD	million gallons per day
NASSCO	National Association of Sewer Service Companies
NPDES	National Pollutant Discharge Elimination System
O&M	Operations and Maintenance
OMB	Office of Management and Budget
PACP	Pipeline Assessment Certification Program
psi	pounds per square inch
SAD	Special Assessment District
SCADA	Supervisory Control and Data Acquisition
SSO	Sanitary Sewer Overflow
SRF	State Revolving Fund
TSS	Total Suspended Solids
USEPA	United States Environmental Protection Agency
WWTP	Wastewater Treatment Plant

1.0 Introduction

In October 2025, Fishbeck submitted a Clean Water State Revolving Fund (CWSRF) Intent to Apply (ITA) on behalf of the City of Owosso. Because the proposed project was not included in the City's 2022 Project Planning Document, this amendment has been prepared to allow the project to be considered for FY 2027 funding. The proposed improvements include construction of a new wet-weather pump station near the existing sanitary sewer overflow (SSO) to collect and convey excess flows, as well as an equalization basin at the Wastewater Treatment Plant (WWTP) to provide storage and treatment during peak wet-weather events. The primary purpose of the project is to prevent future SSOs within the collection system and at the WWTP.

The total estimated CWSRF funding required for construction of the new wet-weather pump station and equalization basin is \$30,000,000. Construction is anticipated to begin in summer 2027.

2.0 Project Background

2.1 Study Area

The Study Area is defined as the portion of the wastewater collection system that contributes flow to the Owosso WWTP and serves as the basis for evaluating the proposed improvements. The existing sewer district includes the City of Owosso, the City of Corunna, and portions of Owosso and Caledonia Townships, and reflects the current extent of wastewater service provided by the WWTP.

At this time, the City does not anticipate expanding the sewer district. However, sanitary sewer service may be extended on a case-by-case basis in response to landowner requests and where capacity and infrastructure allow. For the purposes of this Project Plan Amendment, the existing sewer district is considered the 20-year Study Area.

2.2 Summary of Project Need

In May 2020, heavy rainfall on saturated ground resulted in flows that exceeded the WWTP's capacity and required a complete process bypass. This event caused multiple SSOs and elevated Total Suspended Solids (TSS) in the effluent. Similar high-flow conditions are expected to become more frequent over the next 20 years, as collection system improvements increase conveyance to the plant and wet-weather intensity and frequency continue to rise.

A Sanitary Sewer Collection System Evaluation completed by Fishbeck in 2025 determined that peak flows from the City of Corunna, Caledonia Township, Owosso Township, and the City's existing collection system contribute to the WWTP's inability to meet EGLE's SSO policy under the modeled 10-year recurrence-interval storm, based on a review of historical flow data.

All flow from the City's service area is conveyed through a 30-inch interceptor that runs adjacent to the Shiawassee River. A 2025 modeling evaluation determined that the unrestricted peak flow from the 10-year storm event is approximately 8,800 gpm (12.7 MGD) from the City's service area. Additional peak flow from the north, approximately 6,300 gpm (9.1 MGD), causes total influent flow to exceed the WWTP's hydraulic capacity of 12,500 gpm (18 MGD).

When this occurs, excess wet-weather flow cannot be conveyed to the plant and is instead stored upstream in the system, resulting in surcharging and potential SSOs. The City's SSO records corroborate this behavior, as overflows in the collection system consistently occur prior to SSOs at the WWTP. Although headworks improvements were completed in 2021, the risk of SSOs remains at the WWTP due to the system's hydraulic limitations during major wet-weather events.

One strategy for addressing system bottlenecks is the construction of a wet-weather pump station at a strategic upstream location where hydraulic relief is needed. SSOs and the most significant bottleneck occur within the

City's downtown district, where constructing a storage facility is not feasible due to space constraints and logistical limitations. Instead, a wet-weather pump station could convey excess flow to a storage facility at the WWTP, where adequate space is available.

To reduce the risk of SSOs at both the WWTP and within the collection system under existing and future conditions, peak flows must be reduced through infiltration and inflow (I/I) removal or upstream storage. In-system storage within the downtown area presents challenges related to site access, constructability, and community impacts. As a result, constructing storage at the WWTP is the most viable option. This approach provides dual benefits: excess wet-weather flows from the upstream system can be pumped and stored at the WWTP, and potential SSO volume from the plant can also be diverted to the basin until high-flow conditions subside.

2.3 Existing Facilities

The City, Caledonia Township, the City of Corunna, and Owosso Township contribute wastewater flow to the WWTP. The WWTP receives flow from two primary interceptor sewers, as shown in Figure 1. The north interceptor conveys flow from the City of Corunna, Caledonia Township, and Owosso Township, while the south interceptor conveys flow from the City.

Flows from the City of Corunna are either pumped by the Corunna Pump Station or conveyed through the James Street gravity sewer to Caledonia Township's collection system. Flows from the City of Corunna and Caledonia Township are then pumped by Pump Station 8, located in Caledonia Township, to a receiving 27-inch gravity sewer on North Hintz Road.

A 2 MGD primary wastewater treatment facility was constructed in the 1930s to serve the City, with chlorination added in the 1960s. In the early 1980s, the WWTP was upgraded to a 6 MGD independent physical-chemical treatment facility to serve the Mid-Shiawassee County area, including the City, the City of Corunna, and the sewered portions of Owosso Township and Caledonia Township. This process did not meet permit requirements and proved costly and problematic to operate.

In 1986, a major process modification was constructed to incorporate biological treatment with the properly functioning components of the physical-chemical treatment plant. In 1987, revisions were made to the filter backwash system.

Today, the WWTP maintains the 6 MGD design capacity established during the 1980s physical-chemical treatment plant upgrades. Improvements to the Owosso WWTP funded through the CWSRF FY 2024 and FY 2025 financing programs are currently underway to address aging equipment at the WWTP.

2.3.1 Average and Peak Dry-Weather and Wet-Weather Flows

Currently, the system experiences wet-weather events that fully utilize the plant's secondary treatment capacity. As improvements are made to the collection system to correct existing bottlenecks that cause backups, additional flow will be conveyed to the plant during peak rain events, increasing the volume received at the WWTP. As a result, peak hourly flows at the WWTP are expected to increase during wet weather events.

Peak hourly flows currently exceed 18 MGD, and no option exists to divert excess flow other than the proposed equalization basin. The basin size is limited by the available footprint and will provide approximately 5 MG of storage. The basin will allow wastewater to be stored, and subsequently fully treated during storm events.

2.4 Fiscal Sustainability Plan

2.4.1 Inventory of Critical Assets

An inventory of all WWTP assets was completed as a part of the AMP. The AMP list consists of 131 WWTP assets. In general, the existing assets have a low or medium probability of failure and a low or medium consequence of failure.

2.4.2 Condition and Performance Evaluation

A condition assessment and performance evaluation of the WWTP were completed as part of the Asset Management Plan (AMP) and are available upon request. The City's sanitary sewer model, along with historical flow datasets, was used to evaluate existing system performance in the 2025 Sanitary Sewer Collection System Evaluation. This evaluation assessed the system's ability to convey wet-weather flows in accordance with EGLE's SSO policy under both existing and projected future conditions.

2.4.3 Water and Energy Conservation

Water and energy conservation measures will be implemented where fiscally and operationally practical as part of the proposed project. A certification confirming that the City has evaluated and will strive to implement water and energy conservation measures will be submitted with the Part III Application.

2.4.4 Plan for Maintaining, Repairing, Funding, and Replacing the Treatment Works

Replacement costs for the WWTP assets were identified as a part of the AMP. The City's AMP is designed to allow for maintenance, repair, funding, and replacement planning.

2.5 Need for Project

As described in Section 2.2, the proposed project includes construction of a wet-weather pump station and a new equalization basin at the WWTP. The wet-weather pump station is intended to reduce or eliminate SSOs within the City's collection system, and the equalization basin will provide storage to prevent SSOs at the WWTP.

The primary location where SSOs occur, and where the most significant hydraulic bottleneck exists, is within the City's downtown area along the river, as shown in Figure 1. There are two 24-inch sewers that converge into 27-inch sewers. The estimated peak flow through the 24-inch sewer is a combined 7,000 gpm instantaneous, or about 5,000 gpm on a peak hourly basis. Based on current information, the peak flow that needs to be relieved is approximately 3,000 to 3,500 gpm. Upsizing infrastructure in this corridor is not feasible. Therefore, conveying excess wet-weather flow beyond the interceptor's capacity by means of a pump station and force main is a viable option. Hydraulic modeling indicates that the pump station should be located nearer to where the two 24-inch sewers converge into a 27-inch sewer. The City is currently conducting smoke testing in upstream areas to identify potential, cost-effective I/I sources. If sources are identified and removed, the required pump station capacity may be reduced based on the achievable level of I/I removal.

Because the WWTP is not sized to treat occasional high-intensity storm flows, providing storage for pumped wet-weather flow is the most practical and economical solution. Locating the storage facility at the WWTP avoids the siting challenges associated with a large storage tank in the downtown bottleneck area. This location provides dual benefits: excess wet-weather flow from the upstream collection system can be pumped and stored at the WWTP, and any potential SSO volume from the WWTP itself can also be diverted to the basin until flows subside.

3.0 Analysis of Alternatives

3.1 Alternative 1 – No Action

Under the No Action Alternative, the system would continue to operate without the improvements needed to provide additional storage. Leaving this condition unaddressed would pose a risk to the system's ability to meet EGLE's SSO policy based on model evaluation of the 10-year recurrence interval storm event and review of historical system performance data. Without additional storage capacity, the system would have no ability to store excess wet-weather flows from the upstream collection system or retain potential overflow volumes at the WWTP until high-flow conditions subside.

While the WWTP currently remains in compliance with its National Pollutant Discharge Elimination System (NPDES) permit, continued operation under existing conditions would likely result in additional SSO events or potential permit violations in the future.

Therefore, the No Action Alternative is not considered a viable alternative.

3.2 Alternative 2 – Optimize Existing Facilities

Alternative 2 involves optimization of the existing facilities. This alternative would include rehabilitation or in-kind replacement of components within the existing collection system. However, this approach would not resolve the underlying capacity limitations associated with the existing 30-inch sewer and its inability to convey occasional excess wet-weather flows. In addition, this alternative does not include a storage component to manage peak wet-weather flows.

As a result, SSOs within the collection system and at the WWTP would likely continue to occur. Therefore, this alternative is not considered a viable alternative and will not be evaluated further.

3.3 Alternative 3 – Construction Alternative

Alternative 3 involves constructing a wet-weather pump station and force main to convey excess flow from the 30-inch interceptor when it exceeds its hydraulic capacity. The pump station would be located near the location where the two 24-inch sewers converge to 27-inch sewer. The pumped flow would be routed to an equalization basin at the WWTP for temporary storage. This alternative would intercept excess wet-weather flow 3,000 to 3,500 gpm from the upstream collection system and provide storage capacity for both upstream flows and any potential SSO volume generated at the plant.

By providing controlled storage and conveyance during peak wet-weather events, this alternative offers the operational flexibility needed to manage excess flows until conditions subside. It also reduces the risk of noncompliance with EGLE's SSO policy, as demonstrated in the modeled 10-year recurrence-interval storm and the review of historical performance data. For these reasons, Alternative 3 is identified as the selected alternative.

Refer to Figures 2 and 3.

3.4 Alternative 4 – Regional Alternative

The City currently operates a regional WWTP that serves the City, the City of Corunna, and the sewered portions of Owosso Township and Caledonia Township. Because the existing system already provides regional wastewater treatment for the service area, a regionalization alternative is not considered feasible and will not be evaluated further in the alternatives analysis.

4.0 Principal Alternative

Based on the results of the first alternatives analysis, the following principal alternative will be carried forward for monetary and environmental evaluation: Alternative 3 – Construction Alternative.

4.1 Monetary Evaluation of Principal Alternatives

A monetary evaluation was completed to compare the present worth of each principal alternative over a 20-year planning period. The 20-year present worth incorporates a real discount (interest) rate that is released annually by the Office of Management and Budget (OMB) and recommended by the U.S. Environmental Protection Agency for CWSRF project planning.

A real discount rate of 2.2% from the most recent OMB release was applied in the monetary evaluation calculations. If the OMB releases an updated discount rate, the monetary evaluation will be updated prior to submission of the final Project Planning Document Amendment.

The total present worth is calculated as the sum of the capital cost plus the present worth of the operation and maintenance (O&M) costs, minus the present worth of the project salvage value. The capital cost reflects the preliminary opinion of probable construction cost. The 20-year salvage value was calculated using straight-line depreciation and the useful life for each component recommended in the CWSRF project planning guidance.

Table 1 summarizes the results of the monetary evaluation. A detailed breakdown of the project costs and present worth analysis for the principal alternative is provided in Appendix 1.

Table 1 – Monetary Evaluation

	Alternative 3 – Construction
Capital Cost	\$30,000,000
Annual O&M Cost	\$10,000
Salvage Value	\$11,956,035
Present Worth of O&M Cost	\$160,400
Present Worth of Salvage Value	(\$7,737,000)
20-Year Total Present Worth	\$22,423,400

The monetary evaluation was completed under the following assumptions:

- Each principal alternative would be constructed using the traditional design-bid-build delivery method.
- Sunk costs such as outstanding bond indebtedness and the cost of existing facilities were excluded from the analysis.
- Energy and land cost escalation were not factors in the analysis.
- Project partitioning is not required for any of the principal alternatives.

4.2 Salvage Value

The planning period for the monetary evaluation is 20 years. At the end of this period, portions of the proposed structures and equipment will have salvage value. Straight-line depreciation has been used to calculate the salvage values for the principal alternative. The present worth of the salvage value for these assets has been computed using the real discount rate. The present worth of the salvage value is presented in the monetary evaluation table.

4.3 Escalation

The monetary evaluation allows for the escalation of energy costs and land values. The costs of labor, equipment, and materials have not been escalated. For this monetary evaluation, energy costs have not been escalated, and land values are not included in the evaluation.

4.4 Mitigation Costs

No mitigation costs are anticipated as part of the proposed project.

4.5 Partitioning the Projects

No project partitioning is anticipated.

4.6 Environmental Evaluation

Alternative 3 includes construction of a pump station to convey excess wet-weather flows in the bottleneck area. The equalization basin located at the WWTP will store the excess wet-weather flows conveyed by the pump station and will mitigate SSOs that have previously occurred during severe wet-weather events.

The pump station will be located near the bottleneck along the 30-inch interceptor, with the final site selected to minimize impacts. The equalization basin will be constructed at the WWTP, where no impacts to cultural or historic resources, natural or wild and scenic rivers, agricultural resources, flora and fauna, or land use are anticipated. Because work will occur primarily at existing facilities, the alternatives are not expected to encroach on sensitive environmental features. Construction activities may cause temporary, localized air quality impacts; however, these effects will be short-lived and will dissipate once construction is complete.

4.6.1 Implementability and Public Participation

The public will be provided an opportunity to participate in a public hearing at Owosso City Hall. Notice of the public hearing will be provided in accordance with CWSRF public participation requirements. A copy of the meeting minutes will be included in the final Project Planning Document Amendment. The public has been and will continue to be provided opportunities to comment on the proposed project. All comments received will be reviewed and considered as appropriate during the design and construction of the improvements.

4.7 Technical and Other Considerations

4.7.1 Infiltration and Inflow Removal

I/I is defined as clear water entering the system during wet weather events or under high groundwater conditions. In certain instances, I/I removal may be cost-effective compared to the operational costs associated with transporting and treating clear water. The City will continue to maintain the collection system and remove sources of I/I through its existing O&M program.

4.7.2 Structural Integrity

The collection system was evaluated as part of a recently completed collection system Asset Management Plan (AMP). The National Association of Sewer Service Companies (NASSCO) Pipeline Assessment Certification Program (PACP) grading system was used to define the severity of pipe defects. Any structural deficiencies identified in the collection system will be addressed separately from this project. The collection system AMP will be made available upon request.

4.7.3 Sludge and Residuals

Not applicable to this project.

4.7.4 Industrial Pretreatment

The Owosso WWTP receives a portion of its influent flow from significant industrial users. Industrial pretreatment requirements have been incorporated into the City's rules and regulations.

4.7.5 Growth Capacity

The capacity of the proposed facilities under Alternative 3 considers the wastewater needs during the 20-year planning period. The proposed improvements are designed to accommodate projected 20-year flows and loadings.

4.7.6 Areas Currently Without Sewers

The City does not currently have plans to expand the sewer district. However, sanitary sewer service may be extended on a case-by-case basis at the request of property owners. For planning purposes, the existing sewer district is assumed to represent the 20-year Study Area.

4.7.7 Reliability

Each alternative has been evaluated based on its ability to meet and consistently maintain permit limitations throughout the useful life of the project. The improvements included in Alternative 3 will be designed to meet all United States Environmental Protection Agency (USEPA) reliability requirements for wastewater treatment. Alternative 3 provides the greatest overall system reliability among the alternatives evaluated.

4.7.8 Alternative Sites and Routings

Because of the existing collection system and treatment infrastructure, the locations of the proposed pump station and equalization basin are largely dictated by existing conditions. The pump station will be located in the vicinity of the hydraulic bottleneck in the collection system.

4.7.9 Combined Sewer Overflows

The collection system for the Owosso WWTP is a separate system and does not have any CSOs.

4.7.10 Contamination at the Project Site

There are no known contaminated sites within the vicinity of the proposed pump station and WWTP improvements. Map 1 indicates the locations of contaminated sites within the City.

4.7.10.1 Green Project

Not applicable to this project.

5.0 Selected Alternative

The Selected Alternative: Alternative 3 – Construction Alternative: A new wet-weather pump station, force main to convey flow to the WWTP, and construction of a new equalization basin at the WWTP is proposed.

5.1 Relevant Design Parameters

5.1.1 Pump Station

The pump station will be a submersible wet-weather pump station consisting of a wet well, submersible pumps, piping, valves, and associated electrical systems. A minimum of two pumps will be provided to convey

wet-weather flows 3,000 to 3,500 gpm exceeding the capacity of the 27-inch interceptor. The flow will be conveyed to the WWTP by a force main connecting the pump station to the WWTP.

5.1.2 Influent Equalization Basin

An equalization basin is recommended to manage potential SSOs at the WWTP during peak storm events that exceed the capacity of the WWTP and the collection system. Site piping will convey wastewater to and from the equalization basin and the headworks. A 3 to 5 MG basin is currently planned; however, the final volume will be confirmed during detailed design. The basin will enable controlled, consistent flow to the WWTP during wet weather conditions and is intended to significantly reduce or eliminate SSOs under the design storm conditions.

5.2 Project Maps

Figure 1 through Figure 3 depicts the proposed locations for the selected alternative.

5.3 Controlling Factors

The selected alternative addresses the existing system bottleneck and meets the required 20-year planning horizon while supporting compliance with the discharge requirements of the NPDES permit. Following SSOs that occurred between 1995 and 2005, the City received an Administrative Consent Order (ACO) requiring corrective actions in the collection system, as described in Appendix 2. The proposed improvements are intended to mitigate environmental impacts associated with these events. Implementation of the proposed project will improve system reliability and reduce the risk of SSOs within the collection system and at the WWTP.

5.4 Special Assessment District Projects

A Special Assessment District (SAD) will not be created as a part of the project. As the proposed improvements are for the benefit of all sewer users within the sewer district, the creation of a SAD will not be necessary.

5.5 Sensitive Features

Environmentally sensitive features, including wetlands, floodplains, prime or unique agricultural lands, archaeological sites, and threatened or endangered species, were evaluated as part of the alternatives analysis. Based on a review of wildlife and cultural resources within the project vicinity, no impacts to sensitive features are anticipated. Wetlands and major surface waters within the project area are shown on Map 2, while the FEMA floodplain and soils information are provided on Maps 3 and 4, respectively. The proposed project is not expected to result in adverse impacts to environmentally sensitive resources. Any required permits will be obtained prior to construction.

5.6 Schedule for Design and Construction

Several preliminary planning and design activities have already been completed by the City. These prior efforts will allow the design of the proposed improvements included in this amendment to proceed following approval of the Project Planning Document Amendment. The anticipated design and construction schedule is summarized in Table 2.

Table 2 – Design and Construction Schedule

Activities	Estimated Milestone
EGLE Fiscal Year and Quarter Planned for Project	FY 2027, Quarter 4
Final Design	April 2027
Construction Permit	May 2027
Bidding	May 2027
Bidding Opening	June 2027
CWSRF Funding Award	August 2027
Anticipated Project Start	October 2027

Funding availability and permitting may affect the construction schedule. The project will require a permit under Act 451, Part 41 (Wastewater Construction).

5.7 Cost Summary

A high-level summary of the total estimated project cost, in 2026 dollars, is provided in Table 3. A detailed breakdown of the costs associated with planning, design, and construction of the selected alternative is included in Appendix 1.

Table 3 – Proposed Project Cost Summary

Item	Estimated Cost
Total Estimated Project Cost	\$30,000,000

5.8 Authority to Implement the Selected Alternative

The City owns and operates the WWTP and the property on which the facilities are located and is responsible for providing adequate wastewater treatment to its customers. The proposed pump station will be constructed on City-owned property, or easements will be acquired, as necessary. With support from City staff and its professional consultants, the City has the legal authority, technical capability, and financial capacity to plan, fund, construct, operate, and maintain the proposed wastewater improvements.

5.9 User Costs

The City conducted several publicized community meetings during the summer of 2025 to review planned projects and proposed user rate adjustments. Following these meetings, the City Council adopted a resolution implementing user rate increases through 2030 to support planned CWSRF funded projects. Additional information is provided in Appendix 3.

5.10 Overburdened Community

Part 53, Clean Water Assistance, of the Natural Resources and Environmental Protection Act, 1994 PA 451, as amended, provides benefits to municipalities that meet the State’s criteria for disadvantaged community status. The City will submit the Overburdened Community Status Determination Worksheet once it becomes available.

5.11 Project Expected Useful Life

It is important to verify that the proposed improvements will outlive the loan financing for those improvements. A weighted average calculation was used to confirm that the expected useful life of the project exceeds the 20-year loan term. The design useful life for each equipment type and the weighted average is provided in Table 4.

Table 4 – Project Expected Useful Life

Item	Useful Life (years)
Equalization Basin Concrete	100
Site Restoration and Piping	50
Process Mechanical	25
Electrical/SCADA	25
Force Main PS to WWTP	50
Wet-Weather Pumps (up to 3) Submersible	25
Wet Well/Valve Vault (Concrete)	100
Site Restoration/Piping	50
Process Mechanical	25
Electrical/SCADA	25
Total Weighted Useful Life	85

6.0 Evaluation of Environmental Impacts

6.1 Direct Impacts

Direct impacts are the social and environmental impacts that are directly attributable to the construction and operation of a project. The direct impacts attributable to project construction, project operation, and social impacts are included within this section.

6.2 Construction Impacts

6.2.1 Project Setting

The proposed improvements will occur at the selected location for the pump station and at the existing WWTP site. No adverse impacts to sensitive features are anticipated due to construction activities associated with the proposed improvements. These impacts will be evaluated further during design. Endangered and threatened species were reviewed and identified. Long-term impacts associated with construction activities on these species are not anticipated.

Historical and cultural sites were reviewed. No known sites occur within the project area.

Any short-term impacts on the Shiawassee River due to construction activities will be mitigated by measures such as soil erosion and sedimentation control to prevent surface water impacts. If a river crossing is required for the new force main, it will be evaluated further during design. No changes to drainage within the project area are anticipated. All areas disturbed during construction activities will be restored to their original condition.

7.0 Mitigation Measures

Where adverse impacts cannot be avoided, structural and nonstructural measures will be implemented to minimize or mitigate environmental impacts. Structural measures include those incorporated into the design and construction of the facilities. Nonstructural measures include those associated with governmental, institutional, or private plans, policies, or regulations, as well as the phasing of construction. These measures will be implemented, as appropriate, to minimize potential impacts during construction and operation of the proposed improvements.

7.1 Mitigation of Short-Term Impacts

The following are short-term construction impacts of the project and the associated mitigation measures:

- Construction activities will be limited to hours determined by the City. Noise, odor, and dust will be minimized through implementation of soil erosion and sedimentation control measures included in the project plans and specifications.
- Standard dust control methods, such as water and/or calcium chloride applications, will be used during construction and restoration activities.
- All disturbed ditches and lawns will be seeded and/or sodded. Tree removal will be limited to those necessary for construction. Vegetation removed as part of construction will be restored or replaced.
- Any surplus or waste material generated during construction will be disposed of properly at an approved upland disposal site.
- All disturbed areas will be restored to existing grades.
- The proposed equalization basin improvements will occur at the WWTP adjacent to the Shiawassee River. Construction activities will be confined to the designated work area, and precautions will be taken to avoid storing or stockpiling construction materials near the river.
- The proposed project is located within the 100-year floodplain. No stockpiling of excess material will be allowed within the 100-year floodplain.

7.2 Mitigation of Long-Term Impacts

Every effort will be made to avoid long-term or irreversible environmental impacts. The selected alternative has been evaluated for potential long-term effects, and none are anticipated. Where short-term impacts cannot be avoided, appropriate mitigation measures will be implemented to ensure that sensitive environmental features do not experience permanent or irreversible adverse impacts.

The long-term impacts associated with the short-term construction activities required to implement the proposed improvements are considered negligible relative to the environmental and community benefits provided by the project. No significant long-term impacts have been identified as a result of the proposed improvements.

7.2.1 *Siting Decisions*

Alternative pump station locations will be evaluated further as part of the design process. The final location of the equalization basin at the WWTP will also be determined during final design. Locations with the fewest environmental impacts will be given priority during the design process.

7.2.2 *Operational Impacts*

The proposed improvements are not anticipated to result in odor, aerosol, or noise issues. The improvements will also provide redundancy and resilience during excess wet-weather events. The existing plant currently has limited provisions for operational flexibility to manage wastewater flows. Construction of the equalization basin will provide additional operational flexibility.

7.3 Mitigation of Indirect Impacts

The WWTP flow capacity will remain unchanged; however, construction of the equalization basin will provide operational flexibility for the storage and treatment of excess wet-weather flows. The new pump station will intercept excess flows from the system bottleneck and is intended to reduce the likelihood of SSOs. The proposed improvements are designed to accommodate expected residential, commercial, and industrial growth within the sewer district in the near term. No adverse indirect impacts are anticipated.

8.0 Public Participation

8.1 Public Meeting Advertisement

On April 3, 2026, a notice of the public meeting for the CWSRF Project Planning Document Amendment Proposed Improvements for the pump station and equalization basin will be posted on the City's website (<https://www.ci.owosso.mi.us/News>). The EGLE Project Manager will be provided with a link to this posted public meeting advertisement. The advertisement will briefly describe the proposed project and estimated costs. It will also note the availability of the report for public review and invite written comments from the public. The Project Planning Document Amendment will be made available on the City's website for public review and comment. Written comments will be requested to be received by April 20, 2026, the date of the public meeting.

8.2 Formal Public Meeting

A public meeting will be held at City Hall, 301 W Main St, Owosso, MI 48867, on April 20, 2026. The meeting minutes and presentation slides from the public meeting will be included in the final report.

8.2.1 Public Meeting Contents

Fishbeck will provide a presentation of the proposed improvements at the public meeting. The contents of the presentation will include the following:

- A description of the project needs and problems to be addressed by the proposed projects and the principal alternatives that were considered.
- A description of the selected alternative, including capital costs.
- A description of project financing and anticipated costs to users, including the proposed method of project financing and the proposed annual charge to the typical residential customer.
- A description of the anticipated social and environmental impacts associated with the recommended alternatives and the measures that will be taken to mitigate adverse impacts.

8.3 Comments Received and Answered

Any comments received will be addressed and included in the final report.

8.4 Adoption of the Project Planning Amendment

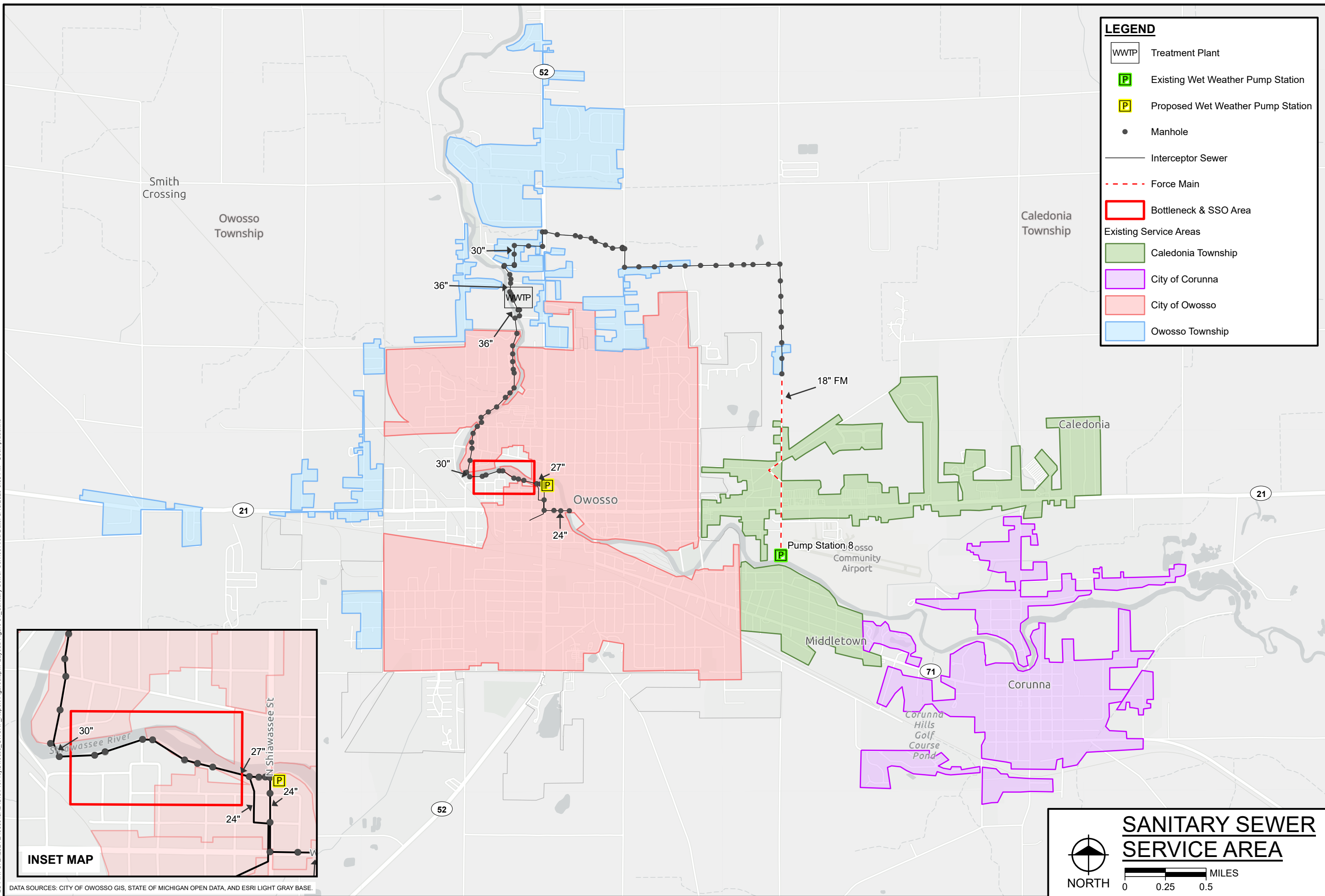
A resolution to formally adopt the Project Planning Document Amendment and implement the selected alternatives will be passed at a regular City Council meeting on April 20, 2026, and included in the final report.



Figures



PLOT INFO: Z:\2024\240369\CAD\GIS\Pro\Owosso_CWSRF_Report\Figures.aprx Layout: Figure 01 - Sanitary Sewer Service Area Date: 3/10/2026 3:55 PM User: pbbaskins

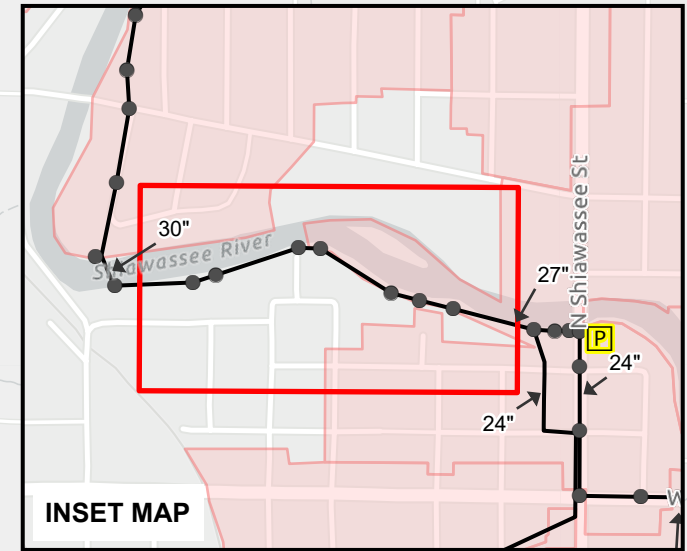


LEGEND

- WWTP Treatment Plant
- P Existing Wet Weather Pump Station
- P Proposed Wet Weather Pump Station
- Manhole
- Interceptor Sewer
- - - Force Main
- Bottleneck & SSO Area

Existing Service Areas

- Caledonia Township
- City of Corunna
- City of Owosso
- Owosso Township



SANITARY SEWER SERVICE AREA

NORTH

0 0.25 0.5 MILES

fishbeck
Engineers | Architects | Scientists | Constructors

Hard copy is intended to be 11"x17" when plotted. Scale(s) indicated and graphic quality may not be accurate for any other size.

City of Owosso
Shiawassee County, Michigan
Clean Water State Revolving Fund (CWSRF)
Project Planning Amendment

PROJECT NO.	240369
FIGURE NO.	1

DATA SOURCES: CITY OF OWOSSO GIS, STATE OF MICHIGAN OPEN DATA, AND ESRI LIGHT GRAY BASE.
©Copyright 2026 All Rights Reserved

PLOT INFO: Z:\2024\240369\CAD\GIS\ProProj\Owosso_CWSRF_Report_Figures.aprx Layout: Figure 02_WWTP Site Date: 3/3/2026 1:14 PM User: pibaskins

DATA SOURCES: CITY OF OWOSSO GIS, MISAIL IMAGERY, & STATE OF MICHIGAN OPEN DATA.



LEGEND

- Manhole
- Interceptor Sewer
- ▭ Proposed Equalization Basin Options

**WWTP SITE PLAN
AND PROPOSED
EQUALIZATION BASIN**

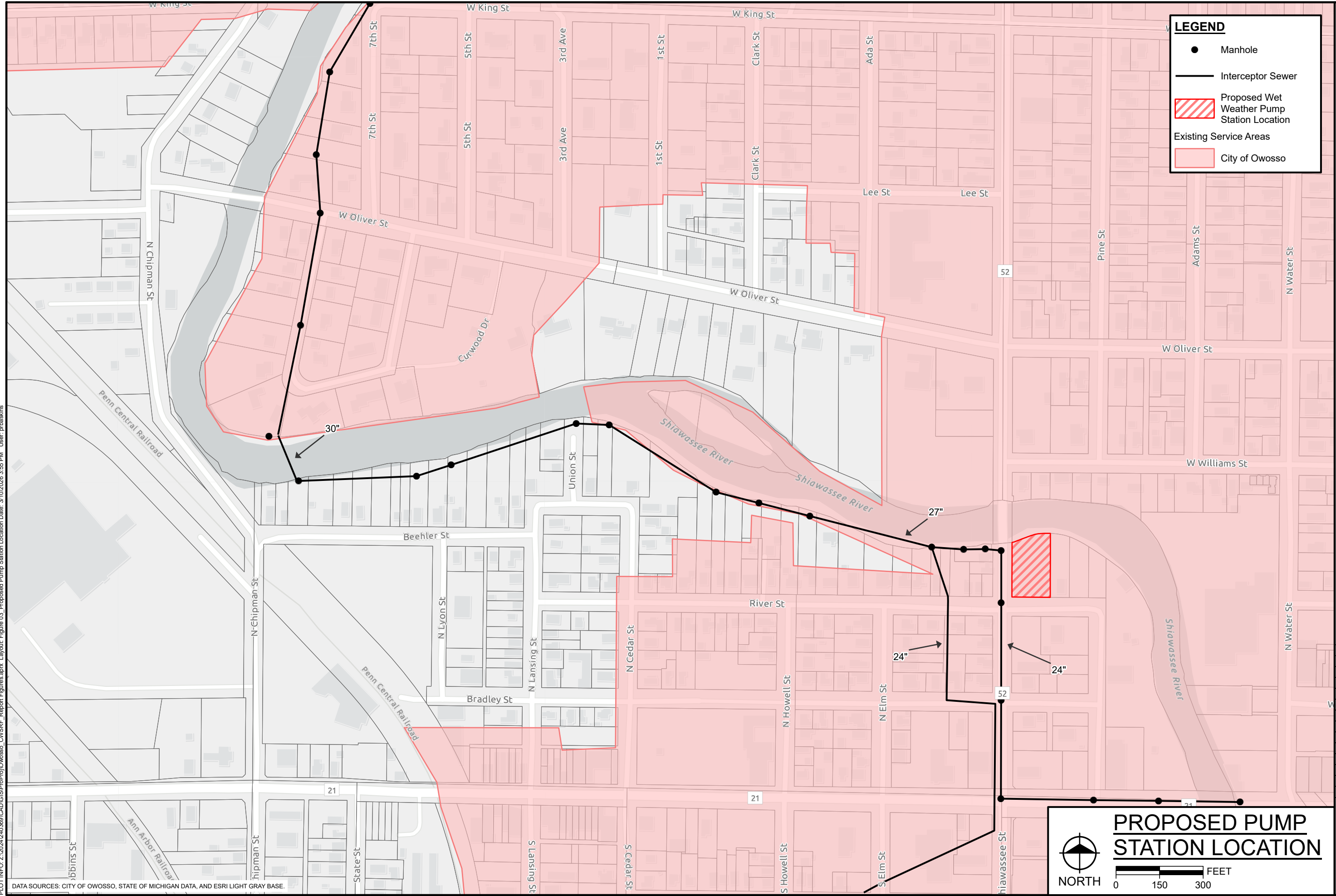
NORTH

0 50 100 FEET

Hard copy is intended to be 11"x17" when plotted. Scale(s) indicated and graphic quality may not be accurate for any other size.

PLOT INFO: Z:\2024\240369\CADD\GIS\Proj\Owosso_CWSRF_Report\Figures.aprx Layout: Figure 03_Proposed Pump Station Location Date: 3/10/2026 3:55 PM User: pfbaskins

DATA SOURCES: CITY OF OWOSSO, STATE OF MICHIGAN DATA, AND ESRI LIGHT GRAY BASE.



LEGEND

- Manhole
- Interceptor Sewer
- ▨ Proposed Wet Weather Pump Station Location
- Existing Service Areas
- City of Owosso

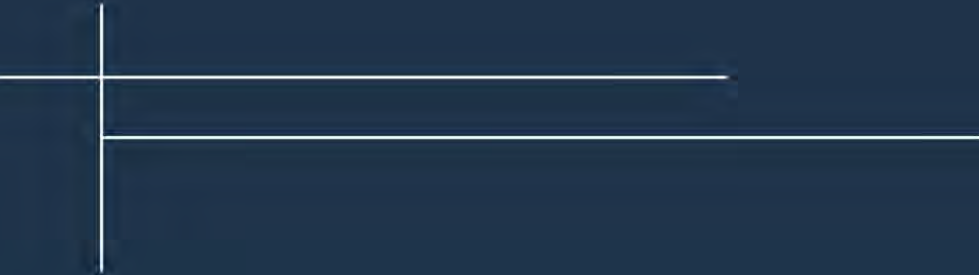
PROPOSED PUMP STATION LOCATION

NORTH

0 150 300 FEET

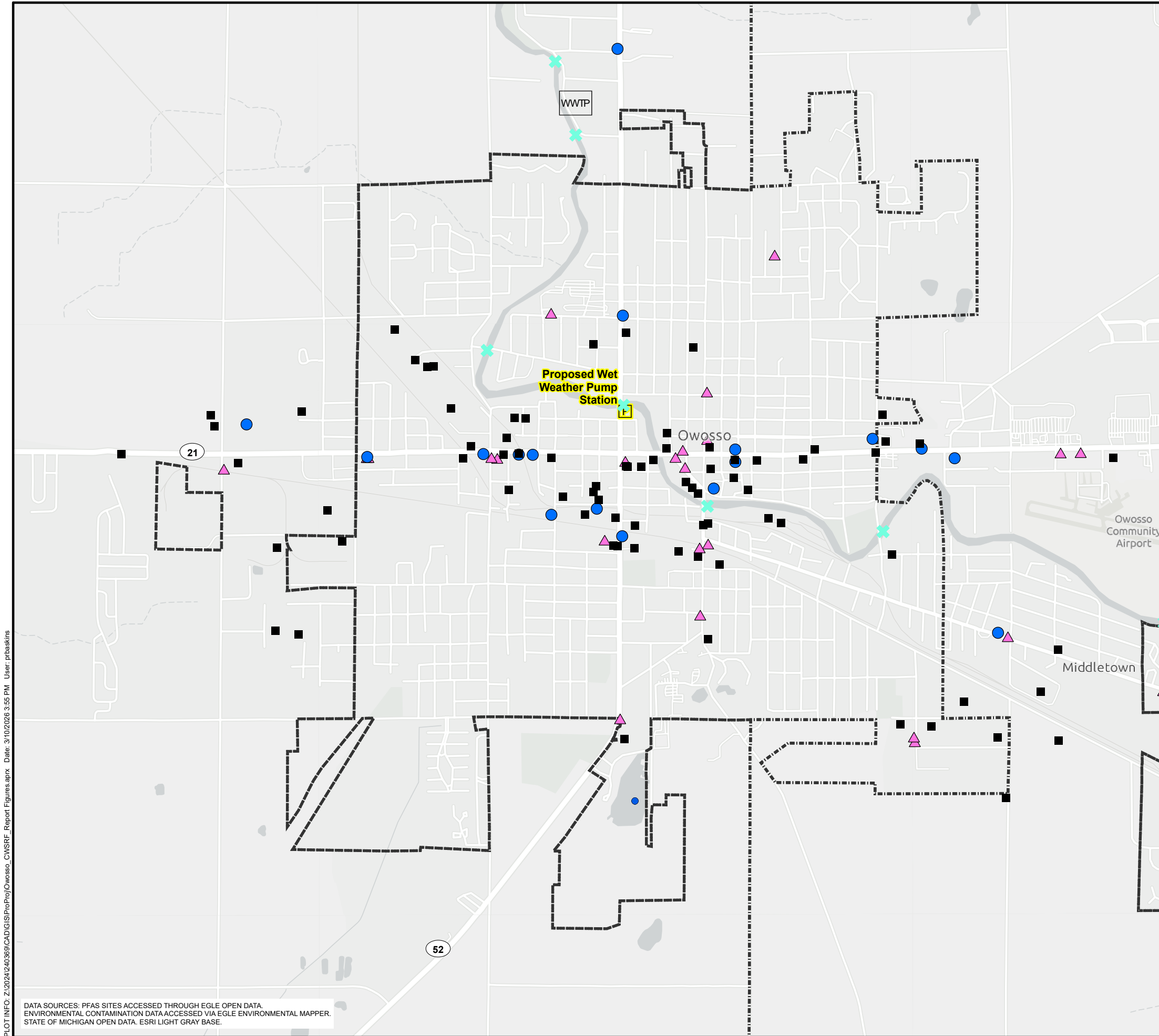
Hard copy is intended to be 11"x17" when plotted. Scale(s) indicated and graphic quality may not be accurate for any other size.

City of Owosso
 Shiawassee County, Michigan
**Clean Water State Revolving Fund (CWSRF)
 Project Planning Amendment**



Maps



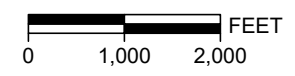


LEGEND

- WWTP Wastewater Treatment Plant
- P Proposed Wet Weather Pump Station
- Sites of Environmental Contamination (Part 201)
- Leaking Underground Storage Tanks (Part 213 Open)
- ▲ Leaking Underground Storage Tanks (Part 213 Closed)
- PFAS Surface Water
- ✕ PFAS Sites
- - - Municipal Boundaries



**ENVIRONMENTAL
CONTAMINATION**



PLOT INFO: Z:\2024\240369\CAD\GIS\Proj\Owosso_CWSRF_Report_Figures.aprx Date: 3/10/2026 3:55 PM User: prbaskins

DATA SOURCES: PFAS SITES ACCESSED THROUGH EGLE OPEN DATA.
 ENVIRONMENTAL CONTAMINATION DATA ACCESSED VIA EGLE ENVIRONMENTAL MAPPER.
 STATE OF MICHIGAN OPEN DATA. ESRI LIGHT GRAY BASE.

©Copyright 2026 All Rights Reserved

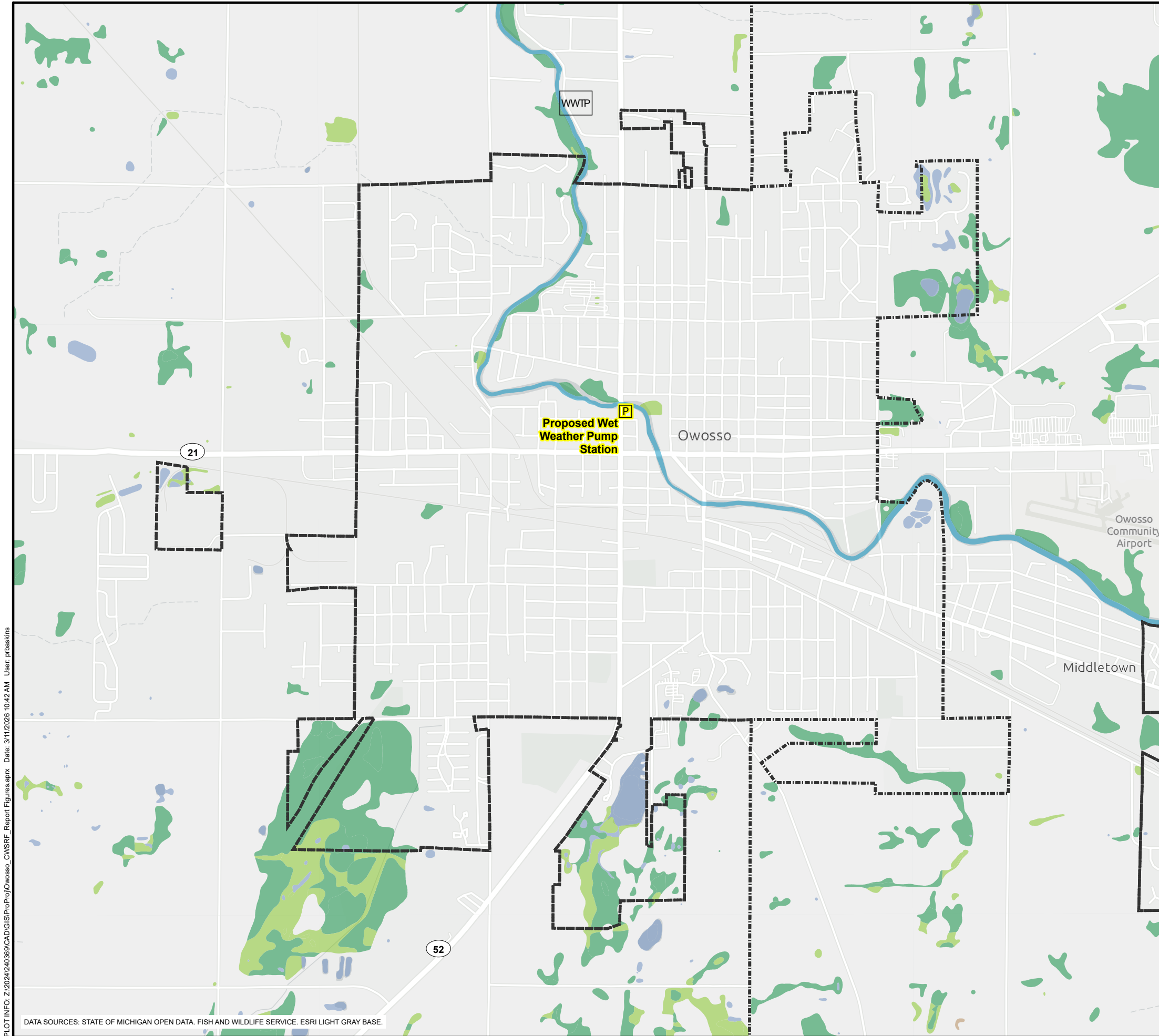


Hard copy is intended to be 11"x17" when plotted. Scale(s) indicated and graphic quality may not be accurate for any other size.

City of Owosso
 Shiawassee County, Michigan
**Clean Water State Revolving Fund (CWSRF)
 Project Planning Amendment**

PROJECT NO.
240369

MAP NO.
1

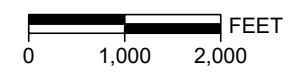


LEGEND

- WWTTP Wastewater Treatment Plant
- P Proposed Wet Weather Pump Station
- Wetlands
 - Freshwater Emergent Wetland
 - Freshwater Forested/Shrub Wetland
 - Freshwater Pond
 - Other
 - Riverine
 - Municipal Boundaries



WETLANDS AND MAJOR SURFACE WATERS

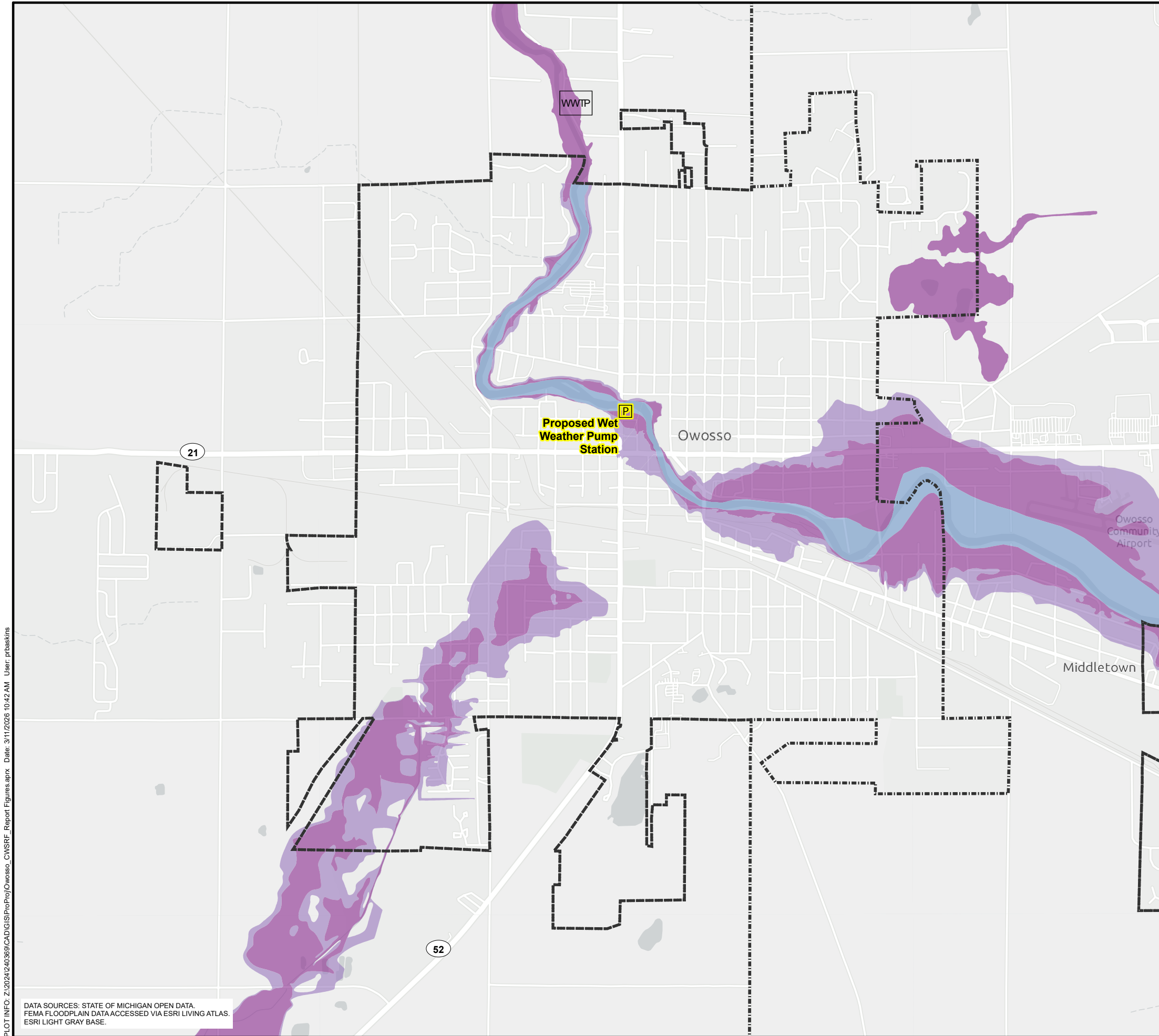


PLOT INFO: Z:\2024\240369\CAD\GIS\Proj\Owosso_CWSRF_Report_Figures.aprx Date: 3/11/2026 10:42 AM User: pbaskins

DATA SOURCES: STATE OF MICHIGAN OPEN DATA. FISH AND WILDLIFE SERVICE. ESRI LIGHT GRAY BASE.

©Copyright 2026 All Rights Reserved

Hard copy is intended to be 11"x17" when plotted. Scale(s) indicated and graphic quality may not be accurate for any other size.

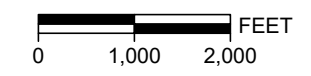


LEGEND

- WWTP Wastewater Treatment Plant
- P Proposed Wet Weather Pump Station
- FEMA Floodplain
 - 1% Annual Chance Flood Hazard
 - 0.2% Annual Chance Flood Hazard
 - Regulatory Floodway
 - Municipal Boundaries



FEMA FLOODPLAIN



PLOT INFO: Z:\2024\240369\CAD\GIS\Proj\Owosso_CWSRF_Report_Figures.aprx Date: 3/11/2026 10:42 AM User: prbaskins

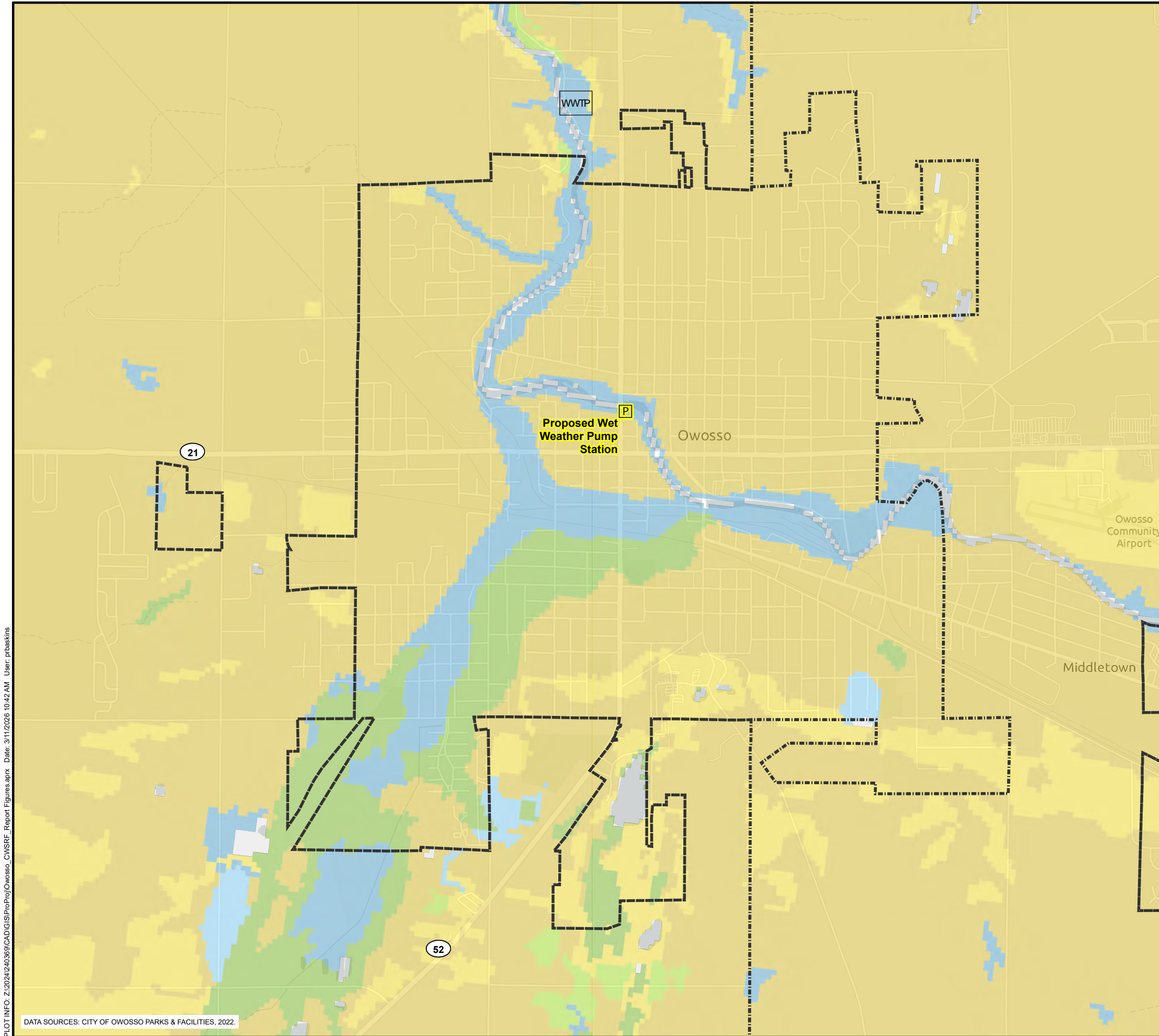
DATA SOURCES: STATE OF MICHIGAN OPEN DATA.
 FEMA FLOODPLAIN DATA ACCESSED VIA ESRI LIVING ATLAS.
 ESRI LIGHT GRAY BASE.

©Copyright 2026 All Rights Reserved

Hard copy is intended to be 11"x17" when plotted. Scale(s) indicated and graphic quality may not be accurate for any other size.

PROJECT NO.
240369

MAP NO.
3



DATA SOURCES: CITY OF OWOSSO PARKS & FACILITIES, 2022.

PLOT INFO: Z:\2024\240369\CAD\GIS\ProProj\Owosso_CWSRF_Report_Figures.aprx Date: 3/11/2026 10:42 AM User: prbaskins

©Copyright 2026 All Rights Reserved

LEGEND

- WWTP Wastewater Treatment Plant
- P Proposed Wet Weather Pump Station
- USA Soils Hydrologic Group
 - Group A
 - Group B
 - Group C
 - Group A/D
 - Group B/D
 - Group C/D
- Municipal Boundaries

NORTH
SOILS
 FEET

Hard copy is intended to be 11"x17" when plotted. Scale(s) indicated and graphic quality may not be accurate for any other size.

City of Owosso
 Shiawassee County, Michigan
**Clean Water State Revolving Fund (CWSRF)
 Project Planning Amendment**

PROJECT NO.
240369

MAP NO.
4

Appendix

Appendix

1

Owosso WWTP
 Equalization Basin and Pump Station
 Project No. 220102

Cost Item	Units	Qty	Unit Cost	Initial Estimated Capital Cost
Equalization Basin				
Earthwork	CY	45000	60	\$2,700,000.00
Equalization Basin Concrete	CY	8130	1500	\$12,195,000.00
Site Restoration and piping	LS	1	\$ 500,000.00	\$500,000.00
Process Mechanical	LS	1	\$ 307,900.00	\$307,900.00
Electrical/SCADA	LS	1	\$ 307,900.00	\$307,900.00
Subtotal of EQ				\$16,011,000
Contractor General Conditions, Overhead, and Profit (15%)				\$2,410,000
Contingency (15%)				\$2,410,000
Engineering/Administration/Legal (15%)				\$3,130,000
Total of EQ Basin				\$23,961,000
Wet Weather Pump Station				
Forcemain PS to WWTP	LF	6800	\$ 300.00	\$2,040,000.00
Wet Weather Pumps (upto 3) submersible	EA	3	\$ 200,000.00	\$600,000.00
Wet Well /valve vault(Concrete)	LS	1	\$ 250,000.00	\$250,000.00
Land and Easement Acquisition	LS	1		\$80,000.00
Site Restoration/Piping	LS	1	\$ 300,000.00	\$300,000.00
Process Mechanical	LS	1	\$ 61,500.00	\$61,500.00
Electrical/SCADA	LS	1	\$ 202,875.00	\$202,875.00
Subtotal of PS				\$3,534,000
Contractor General Conditions, Overhead, and Profit (15%)				\$540,000
Contingency (15%)				\$540,000
Engineering/Administration/Legal (15%)				\$700,000
Total of Pump Station				\$5,314,000
Total Estimated Project Cost (EQ and PS)				\$ 30,000,000
	Estimated Capital Cost	Design Life (yrs)	Replace. Cost	Salvage Value
Equalization Basin Concrete	\$12,195,000	100	\$0	\$9,756,000
Site Restoration and piping	\$500,000	50	\$0	\$300,000
Process Mechanical	\$307,900	25	\$0	\$61,580
Electrical/SCADA	\$307,900	25	\$0	\$61,580
Forcemain PS to WWTP	\$2,040,000	50	\$0	\$1,224,000
Wet Weather Pumps (upto 3) submersible	\$600,000	25	\$0	\$120,000
Wet Well /valve vault(Concrete)	\$250,000	100	\$0	\$200,000
Site Restoration/Piping	\$300,000	50	\$0	\$180,000
Process Mechanical	\$61,500	25	\$0	\$12,300
Electrical/SCADA	\$202,875	25	\$0	\$40,575
Total Estimated Cost	\$3,534,000			\$11,956,035

20 Year Present Worth	Actual Cost	20 yr Present Worth
Initial Capital Cost	\$ 30,000,000	\$ 30,000,000
Annual O & M Cost	\$10,000	\$160,400
Salvage Value	\$ 11,956,035	(\$7,737,000)
Total Estimate of Present Worth		\$ 22,423,400

Notes:
 Present Worth estimated using discount rate of 2.2% from EGLE

Appendix

2

**STATE OF MICHIGAN
DEPARTMENT OF ENVIRONMENTAL QUALITY
WATER BUREAU**

In the matter of:

ACO-SW05-015

Date Entered: _____

Gregg G. Guetschow, City Manager
City of Owosso
301 West Main Street
Owosso, Michigan 48867

ADMINISTRATIVE CONSENT ORDER

This document results from allegations by the Water Bureau (WB) of the Department of Environmental Quality (DEQ). The DEQ alleges the city of Owosso (City), which owns and operates the Owosso/Mid-Shiawassee Co. Wastewater Treatment Plant located at 1410 Chippewa Trail, Owosso, Shiawassee County, Michigan, is in violation of Part 31, Water Resources Protection, of the Natural Resources and Environmental Protection Act, 1994 PA 451, as amended (NREPA), MCL 324.3101 et seq. The City and the DEQ agree to resolve the violations set forth in the Findings section of this Administrative Consent Order (Consent Order) and to resolve this matter by entry of this Consent Order.

I. STIPULATIONS

The City and the DEQ stipulate as follows:

- 1.1 The NREPA MCL 324.101 et seq. is an act that controls pollution to protect the environment and natural resources in the state.
- 1.2 Pollution Control, Part 31, Water Resources Protection, of the NREPA (Part 31), MCL 324.3101 et seq., and the rules promulgated pursuant thereto, provides for the protection, conservation, and the control of pollution of the water resources of the state.
- 1.3 The DEQ is authorized by Section 3112(2) of Part 31 of the NREPA to enter orders requiring persons to abate pollution, and the director of the DEQ or his designee is delegated under Section 301(b) of the NREPA, MCL 324.301(b) to enter into this Consent Order with the City.

- 1.4 The City stipulates to the issuance and entry of this Consent Order to comply by consent and stipulates that the termination of this matter by a final order to be entered as a Consent Order is proper and acceptable. The City further agrees not to contest the issuance of this Consent Order. This Consent Order, thus, shall be considered a final order of the DEQ and shall become effective on the date it is signed by the Chief of the WB, delegee of the director, pursuant to Section 301(b) of the NREPA.
- 1.5 The City and the DEQ agree that the signing of this Consent Order is for settlement purposes only and does not constitute an admission by the City that the law has been violated.
- 1.6 The city manager as signatory to this Consent Order on behalf of the City agrees and attests that he is fully authorized to assure the compliance of the City with all requirements under this Consent Order.
- 1.7 The City shall achieve compliance with the aforementioned regulations in accordance with the requirements contained in Section III, Compliance Program, of this Consent Order.

II. FINDINGS

- 2.1 Section 3109(2) of Part 31 of the NREPA states: "The discharge of any raw sewage of human origin, directly or indirectly, into any of the waters of the state shall be considered prima facie evidence of a violation of this part by the municipality in which the discharge originated..."
- 2.2 Section 3109(4) of Part 31 of the NREPA states: "A violation of this section is prima facie evidence of the existence of a public nuisance and in addition to the remedies provided for in this part may be abated according to law in an action brought by the attorney general in a court of competent jurisdiction."

- 2.3 The City is authorized to discharge treated municipal wastewaters from the Owosso/Mid-Shiawassee County wastewater treatment plant (WWTP) to the Shiawassee River in accordance with the effluent limitations and monitoring requirements and other conditions as set forth in its National Pollutant Discharge Elimination System (NPDES) Permit number MI0023752 issued April 20, 2004 and expiring October 1, 2006.
- 2.4 The City of Corunna, Owosso Township, and Caledonia Township are all tributary to the City's WWTP, but each municipality maintains its own collection system.
- 2.5 The WWTP has a rated maximum capacity of 12 million gallons/day (MGD). The NPDES permit is based on a design flow rate of 6 MGD. During wet weather conditions, the WWTP has received in excess of 14 MGD. During some storm events, the inflow and infiltration (I/I) into the plant is greater than can be processed by all treatment systems at the WWTP.
- 2.6 The City has experienced numerous sanitary sewer overflows (SSOs) in the recent past that discharged into surface waters of the state. The chart below lists the SSO events:

<u>Dates of Sanitary Sewer Overflows and Volume of Discharge</u>					
LOCATION	DATE	VOLUME (gallons)	RECEIVING WATER	CAUSE	DATE OF RESOLUTION
Wright Street Force Main	12/26/1995	Unknown	Shiawassee River	Force Main failure	12/2001
Wright Street Force Main	1/9/1996	Unknown	Shiawassee River	Force Main failure	12/2001
WWTP	1/17/1996	400,000	Shiawassee River	Power outage	1/29/1996
Main Interceptor	2/21/1997-2/22/1997	1,000,000*	Shiawassee River	Main Interceptor unable to handle flow	
Wright Street Force Main	3/24/1997-3/26/1997	30,000	Shiawassee River	Force Main Failure	12/2001
WWTP	5/31/1998	600,000	Shiawassee River	Power outage	5/31/1998

Manhole by Chipman Drain	8/12/1998	600	Shiawassee River	Root mass in manhole blocked flow	
Palmer Street Lift Station	3/18/1999	<1,000	Hopkins Lake	Power outage	5/11/2001
Main Interceptor	5/19/2000	2,000,000*	Shiawassee River	Main Interceptor unable to handle flow	
Manhole by Chipman Drain	9/23-24/00	90,000	Shiawassee River	Roots and Drain unable to handle flow	
Manholes by Chipman Drain and M- 52	2/10/2001	<1,000,000*	Shiawassee River	Collection system unable to handle flow	
S. Shiawassee St. @ W. South Street	7/16/2001	Unknown	No discharge to surface water	Overflow from manhole	7/16/2001
N. bank Shiawassee River w. of M52 bridge	7/7/02- 7/8/02	5,000	Shiawassee River	Blockage of inverted siphon	
N. bank Shiawassee River w. of M52 bridge	3/24/2003	500	Shiawassee River	Blockage of inverted siphon by pieces of pipe due to soil borings	8/19/2004
Manhole overflows just downstream of M-52 bridge and just upstream of M-71 bridge	5/23/2004- 5/27/2004	>1,000,000*	Shiawassee River	Collection system unable to handle flow	
Manholes downstream	1/13/2005- 1/14/2005	500,000	Shiawassee River	Collection system	

of M-52
bridge and
upstream of
M-71 bridge
in Owosso

unable to
handle flow

* Approximate overflow volume

III. COMPLIANCE PROGRAM

IT IS THEREFORE AGREED AND ORDERED THAT the City will take the following actions to prevent further violations of Part 31:

- 3.1 The City agrees to submit to the DEQ for review and approval an initial work plan based on the existing assessment of the sewer collection system that has priority areas to be remediated identified on it within 30 days of entry into this Consent Order, to the address located in paragraph 3.8 of this Consent Order. The City agrees to submit to the DEQ for review and approval a final work plan within 30 days after receiving approval of the plan from the DEQ addressing the planned remediation of illicit public sector Inflow and Infiltration (I/I) and other major areas of public sector I/I that are upstream of the areas in the City experiencing sanitary sewer overflows (SSO's). The City agrees to submit a summary report annually, due on March 1, with the first one due on March 1, 2006 and the last one due the year after all of the planned illicit I/I and other major I/I removal efforts has been completed, in accordance with the City's final approved work plan. The annual summary report shall consist of the most recent assessment of the sewer collection system. The annual assessment of the sewer collection system shall include the results of the City conducting television inspections of all sewer lines in the priority subbasins, all manhole inspections in the collection system, and smoke testing of the lines; any new information that the assessments of the sewer system identify; a summary of the investigation, assessment and remediation activities completed in the previous calendar year; and the work that is left to be completed in the complete identification and removal of illicit I/I and other major public sector I/I connections to the City's sewer collection system. The City agrees that the complete assessment of the sewer collection system and the illicit I/I and other major public sector I/I separation efforts will last no longer than five years, beginning with the date that the DEQ approves the final work plan.

- 3.2 The City agrees to conduct a private sector inspection program in year 1 and 2 of the five year work plan in paragraph 3.1 of this Consent Order to quantify the number and location of illicit private sector connections to the sewer collection system. When existing sump pump and roof drains connecting to the sanitary sewer are located, the City will

immediately initiate an enforcement process beginning with a certified letter from the City to the homeowner in accordance with the City's rules and regulations pursuant to Article IV, Sewer Service, Section 34-101 to Section 34-245 of Chapter 34, Utilities and Services, of the City Code of Ordinances for the City of Owosso. This enforcement process will be initiated with the goal of removing the existing sump pumps and roof drains from the City's sewerage system. A pilot program conducted during year 1 and 2 for the removal of gravity footing drains will also be conducted in order to better define the private sector I/I contribution in the overall sewer model and the actual cost of corrective actions.

- 3.3 The City agrees to conduct flow monitoring and report the results of the monitoring in its annual report due by no later than March 1 of 2006 and 2007, to the DEQ, Water Bureau, Lansing District Office and as required by paragraph 3.1 of this Consent Order. The City agrees to conduct flow monitoring on the southwest quadrant of the City's sewer collection system and complete it in 2005 and to conduct and complete the flow monitoring for the southeast quadrant in 2006.
- 3.4 The City agrees that by March 1, 2007, the City will submit an initial work plan for review and approval that will list the proposed schedule with dates, beginning in 2007, not to exceed ten years for an efficient and appropriate control strategy to reduce or contain I/I from private sector sources and that is equivalent to the remedial design standard of the 25-year/24-hour storm, using growth conditions and normal soil moisture and in accordance with the DEQ Sanitary Sewer Overflow Policy of December 27, 2002.

Some initial options include:

1. I/I reduction including gravity footing drain separation, or
2. Public sector I/I reduction; private sector inflow reduction without gravity footing drain removal, and retention of flow which exceeds system capacity through the use of satellite retention basins or a single basin, or
3. A combination of gravity footing drain separation, retention, and storage.

3.5 Implementing the Control Strategy from Private Sector Sources

A. If the City and the DEQ determine that the City will complete the requirement for a control strategy through I/I reduction including gravity footing drain separation, based upon approval of the initial work plan submitted in accordance with paragraph 3.4 of this Consent Order, the City shall submit a final work plan to the DEQ for review and approval by no later than June 1, 2007. This final work plan shall:

1. Describe the strategy for the separation efforts of the private sector sources of I/I to the City's system, including appropriate permitting needs;
2. Include time frames for separation efforts not to exceed ten years;
3. Describe the location of the sources and the way in which the City will ensure compliance from the homeowner for the separation effort;
4. Describe the reporting method and frequency of reporting that the City will use to notify the DEQ of its progress of the separation efforts, which may include, but its not limited to reporting at the same time as the annual report required by paragraph 3.6 of this Consent Order; and
5. Provide for one year of flow monitoring after the ten years of separation efforts to comply with the provisions of the remedial design standard of the 25-year/24-hourstorm, using growth conditions and normal soil moisture and in accordance with the DEQ Sanitary Sewer Overflow Policy of December 27, 2002.

B. If the City and the DEQ determine that retention and related facilities are needed as a part of the control strategy chosen, based on the results of the flow monitoring conducted in 2005 and 2006, the City shall submit a basis of design with appropriate details for review and approval describing the necessary size, planned location(s), design, and financing of the facilities by June 1, 2007. The appropriate permitting shall be

obtained prior to the beginning of construction and the construction of these facilities shall be completed by December 1, 2010.

C. If the City and the DEQ determine that a combination of gravity footing drain separation, retention, and storage is needed, based on the results of the flow monitoring conducted in 2005 and 2006, the basis of design for review and approval describing necessary size, planned location(s), design, and financing of the gravity footing drain separation, retention and storage shall be submitted by June 1, 2007. The appropriate permitting shall be obtained prior to the beginning of construction and the construction of the retention and storage of this option shall be completed by December 1, 2010; and the gravity footing drain separation of this option shall be completed no later than June 1, 2017.

3.6 The City agrees to submit annual performance reviews to the DEQ Lansing District Office of the operation of the City's sewerage system, including an analysis of the effectiveness of the work completed, pursuant to this Consent Order, in eliminating illicit public and private connections to the sewerage system, thereby reducing the I/I to the sewerage system. The City shall include its first five years of annual performance reviews with its summary report due annually on March 1, in accordance with paragraph 3.1 of this Consent Order. The City shall continue to submit annual performance reviews on March 1 until this Consent Order is terminated in accordance with Section XII of this Consent Order.

3.7 The City agrees to create and pass Rules and Regulations pursuant to its authority of Section 34-203 of Ordinance No. 433 of 1985, entitled "Rules and Regulations" of the City Code of Ordinances for the City of Owosso. The City shall submit these Rules and Regulations to the DEQ for review and approval within 30 days of entry of this Consent Order. The Rules and Regulations shall be created to ban the construction and connection of potential public and private I/I sources to the City's sewerage system that are not strictly approved by the City and other applicable local, state or federal permitting

authorities, including, but not limited to footing drains, rooftop drains and sump pumps; the Rules and Regulations shall list policies and standards for the elimination of existing illicit I/I sources; and the Rules and Regulations shall list an enforcement procedure that the City shall undertake if new illicit connections are discovered.

- 3.8 The City shall submit all reports, work plans, specifications, schedules, or any other writing required by this section to the Lansing District Supervisor, DEQ-WB-Lansing District, P. O. Box 30242, 4th Floor, North Tower, Lansing, Michigan, 48909. Alternatively, mailings requiring a street address may be sent to the Lansing District Supervisor at DEQ-WB-Lansing District, Constitution Hall, 525 W. Allegan, 4th Floor, North Tower, Lansing, Michigan, 48933. The cover letter with each submittal shall identify the specific paragraph and requirement of this Consent Order that the submittal is intended to satisfy.

IV. DEQ APPROVAL OF SUBMITTALS

- 4.1 For any work plan, proposal, or other document, excluding applications for permits or licenses, that are required by this Consent Order to be submitted to the DEQ by the City, the following process and terms of approval shall apply.
- 4.2 All work plans, proposals, and other documents required to be submitted by this Consent Order shall include all of the information required by the applicable statute and/or rule, and all of the information required by the applicable paragraph(s) of this Consent Order.
- 4.3 In the event the DEQ disapproves a work plan, proposal, or other document, it will notify the City, in writing, specifying the reasons for such disapproval. The City shall submit, within 30 days of receipt of such disapproval, a revised work plan, proposal, or other document which adequately addresses the reasons for the DEQ's disapproval. If the revised work plan, proposal, or other document is still not acceptable to the DEQ, the DEQ will notify the City of this disapproval.

- 4.4 In the event the DEQ approves with specific modifications, a work plan, proposal, or other document, it will notify the City, in writing, specifying the modifications required to be made to such work plan, proposal, or other document prior to its implementation and the specific reasons for such modifications. The DEQ may require the City to submit, prior to implementation and within 30 days of receipt of such approval with specific modifications, a revised work plan, proposal, or other document which adequately addresses such modifications. If the revised work plan, proposal, or other document is still not acceptable to the DEQ, the DEQ will notify the City of this disapproval.
- 4.5 Upon DEQ approval, or approval with modifications, of a work plan, proposal, or other document, such work plan, proposal, or other document shall be incorporated by reference into this Consent Order and shall be enforceable in accordance with the provisions of this Consent Order.
- 4.6 Failure by the City to submit an approvable work plan, proposal, or other document, within the applicable time periods specified above, constitutes a violation of this Consent Order and shall subject the City to the enforcement provisions of this Consent Order, including the stipulated penalty provisions specified in paragraph 9.3.
- 4.7 Any delays caused by the City's failure to submit an approvable work plan, proposal, or other document when due shall in no way affect or alter the City's responsibility to comply with any other deadline(s) specified in this Consent Order.
- 4.8 No informal advice, guidance, suggestions, or comments by the DEQ regarding reports, work plans, plans, specifications, schedules or any other writing submitted by the City will be construed as relieving the City of its obligation to obtain written approval, if and when required by this Consent Order.

V. EXTENSIONS

- 5.1 The City and the DEQ agree that the DEQ may grant the City a reasonable extension of the specified deadlines set forth in this Consent Order. Any extension shall be preceded by a written request in duplicate to the DEQ, WB, Enforcement Unit Chief, Constitution Hall, 525 W. Allegan, P.O. Box 30273, Lansing, Michigan, 48909-7773, and the Lansing District Supervisor at the address in paragraph 3.8, no later than ten business days prior to the pertinent deadline, and shall include:
- a. Identification of the specific deadline(s) of this Consent Order that will not be met.
 - b. A detailed description of the circumstances that will prevent the City from meeting the deadline(s).
 - c. A description of the measures the City has taken and/or intends to take to meet the required deadline; and
 - d. The length of the extension requested and the specific date on which the obligation will be met.

The Lansing District Supervisor, in consultation with the Enforcement Unit Chief, shall respond in writing to such requests. No change or modification to this Consent Order shall be valid unless in writing from the DEQ, and if applicable, signed by both parties.

VI. REPORTING

- 6.1 The City shall verbally report any violation(s) of the terms and conditions of this Consent Order to the Lansing District Supervisor by no later than the close of the next business day following detection of such violation(s) and shall follow such notification with a written report within five business days following detection of such violation(s). The written report shall include a detailed description of the violation(s), as well as a description of any actions proposed or taken to correct the violation(s). The City shall report any anticipated violation(s) of this Consent Order to the above-referenced individual in advance of the relevant deadlines whenever possible.

VII. RETENTION OF RECORDS

- 7.1 Upon request by an authorized representative of the DEQ, the City shall make available to the DEQ all records, plans, logs, and other documents required to be maintained under this Consent Order or pursuant to Part 31 or its rules. All such documents shall be retained by the City for at least a period of three years from the date of generation of the record unless a longer period of record retention is required by Part 31 or its rules.

VIII. RIGHT OF ENTRY

- 8.1 The City shall allow any authorized representative or contractor of the DEQ, upon presentation of proper credentials, to enter upon the premises of the facility at all reasonable times for the purpose of monitoring compliance with the provisions of this Consent Order. This paragraph in no way limits the authority of the DEQ to conduct tests and inspections pursuant to the NREPA and the rules promulgated thereunder, or any other applicable statutory provision.

IX. PENALTIES

- 9.1 The City agrees to pay to the State of Michigan \$2,500 as partial compensation for the cost of investigations and enforcement activities arising from the violations specified in Section II of this Consent Order. Payment shall be made within 30 days of the effective date of this Consent Order in accordance with paragraph 9.6.
- 9.2 The City agrees to pay a civil fine of \$20,000 for the violations specified in Section II of this Consent Order. Payment shall be made within 30 days of the effective date of this Consent Order in accordance with paragraph 9.6.
- 9.3 For each failure to comply with the provisions of Section III and IV of this Consent Order,

the City shall pay stipulated penalties of **\$500** per violation per day for 1 to 7 days of violation, **\$1000** per violation per day for 8 to 14 days of violation, and **\$1500** per violation per day for each day of violation thereafter. Failure to perform any of the following requirements shall be considered separate violations of this Consent Order and are subject to stipulated penalties under this paragraph:

- a. Failure to submit an approvable work plan, proposal, or other document by the required dates in accordance with Section III.
- b. Failure to implement, complete or comply with any activity or condition required by Section III, including those contained in any approved work plan or other document required to be implemented and completed by Section III; and
- c. Failure to submit approvable revised work plans, proposals, or other documents addressing a DEQ disapproval or approval with modifications by the required dates in accordance with paragraphs 4.3 or 4.4.

9.4 For each failure to comply with any other provision of this Consent Order not specified in paragraph 9.3, the City shall pay stipulated penalties of **\$500** per violation per day for each day of violation. Failure to perform any of the following requirements shall be considered separate violations of this Consent Order and are subject to stipulated penalties under this paragraph:

- a. Failure to verbally report violations and submit written reports by the required dates in accordance with paragraph 6.1.
- b. Failure to retain records on site in accordance with paragraph 7.1.
- c. Failure to pay civil fines, costs, or stipulated or interest penalties by the required dates in accordance with this section; and
- d. Any other requirement of this Consent Order.

9.5 Stipulated penalties accruing under paragraphs 9.3 or 9.4 shall be paid within 30 days after written demand by the DEQ in accordance with paragraph 9.6.

- 9.6 The City agrees to pay all funds due pursuant to this agreement by check made payable to the State of Michigan and delivered to the DEQ, Revenue Control Unit, P.O. Box 30657, 525 West Allegan Street, 5th Floor, South Tower, Lansing, Michigan, 48909-8157. To ensure proper credit, all payments made pursuant to this Consent Order must include the **Payment Identification Number WTR3034**.
- 9.7 The City agrees not to contest the legality of the civil fine or costs paid pursuant to paragraphs 9.1, and 9.2, above. The City further agrees not to contest the legality of any stipulated penalties or interest penalties assessed pursuant to paragraphs 9.3, 9.4 and 9.5, above, but reserves the right to dispute the factual basis upon which a demand by the DEQ for stipulated penalties or interest penalties is made.

X. DISPUTE RESOLUTION

- 10.1 Unless otherwise provided in this Consent Order, the dispute resolution procedures of this section shall be the City's exclusive mechanism to resolve disputes arising under or with respect to this Consent Order. However, the procedures set forth in this section shall not apply to actions by the state to enforce obligations of the City under this Consent Order. Initiation of dispute resolution shall not be cause for the City to delay the performance of any compliance requirements or response activity.
- 10.2 Any dispute by the City that arises under this Consent Order shall in the first instance be the subject of informal negotiations between the City and the DEQ (parties). The period of negotiations shall not exceed 20 days from the date of written notice by the City to the DEQ that a dispute has arisen, unless the time period for negotiations is modified by written agreement between the parties. A dispute under this section shall occur when the City sends the DEQ a written notice of dispute. If agreement cannot be reached on any issue within this 20-day period, the DEQ shall provide a written statement of its decision to the City and, in the absence of initiation of formal dispute resolution by the City under

paragraph 10.3, the DEQ's position as outlined in its written informal decision, shall be binding on the parties.

10.3 If the City and the DEQ cannot informally resolve a dispute under paragraph 10.2, the City may initiate formal dispute resolution by requesting review of the disputed issues by the DEQ, WB Chief. This written request must be filed with the DEQ, WB Chief within 15 days of the City's receipt of the DEQ's informal decision that is issued at the conclusion of the informal dispute resolution procedure set forth in paragraph 10.2. The City's request shall state the issues in dispute; the relevant facts upon which the dispute is based; any factual data, analysis, or opinion supporting its position; and all supporting documentation upon which the City bases its position. Within 21 days of the WB Chief's receipt of the City's request for a review of disputed issues, the WB Chief will provide a written statement of decision to the City, which will include a statement of his/her understanding of the issues in dispute; the relevant facts upon which the dispute is based; any factual data, analysis, or opinion supporting her/his position; and all supporting documentation relied upon by the WB Chief in review of the disputed issues. The WB Chief's time period for review of the disputed issues may be extended by written agreement of the parties.

10.4 The written statement of the WB Chief issued under paragraph 10.3 shall be a final decision and is binding on the parties unless, within 21 days under the Revised Judicature Act after receipt of the DEQ's written statement of decision, the City files a petition for judicial review in a court of competent jurisdiction that shall set forth a description of the matter in dispute, the efforts made by the parties to resolve it, the relief requested, and the schedule, if any, within which the dispute must be resolved to ensure orderly implementation of this Consent Order.

10.5 An administrative record of the dispute shall be maintained by the DEQ. The administrative record shall include all of the information provided by the City pursuant to paragraph 10.3, as well as any other documents relied upon by the DEQ in making its

final decision pursuant to paragraph 10.3. Where appropriate, the DEQ shall allow submission of supplemental statements of position by the parties to the dispute.

10.6 In documented form on any dispute, the City shall have the burden of demonstrating on the administrative record that the position of the DEQ is arbitrary and capricious or otherwise not in accordance with law. In documented form on any dispute initiated by the City, it shall bear the burden of persuasion on factual issues.

10.7 Notwithstanding the invocation of dispute resolution procedures under this section, stipulated penalties shall accrue from the first day of any failure or refusal to comply with any term or condition of this Consent Order, but payment shall be stayed pending resolution of the dispute. Stipulated penalties shall be paid within 30 days after resolution of the dispute. The City shall pay that portion of a demand for payment of stipulated penalties that is not subject to dispute resolution procedures in accordance with and in the manner provided in Section IX (Penalties).

XI. FORCE MAJEURE

11.1 The City shall perform the requirements of this Consent Order within the time limits established herein, unless performance is prevented or delayed by events that constitute a "Force Majeure." Any delay in the performance attributable to a "Force Majeure" shall not be deemed a violation of the City's obligations under this Consent Order in accordance with this section.

11.2 For the purpose of this Consent Order, "Force Majeure" means an occurrence or nonoccurrence arising from causes not foreseeable, beyond the control of, and without the fault of the City, such as: an Act of God, untimely review of permit applications or submissions by the DEQ or other applicable authority, and acts or omissions of third

parties that could not have been avoided or overcome by the City's diligence and that delay the performance of an obligation under this Consent Order. "Force Majeure" does not include, among other things, unanticipated or increased costs, changed financial circumstances, or failure to obtain a permit or license as a result of the City's actions or omissions.

11.3 The City shall notify the DEQ, by telephone, within 48 hours of discovering any event that causes a delay in its compliance with any provision of this Consent Order. Verbal notice shall be followed by written notice within ten calendar days and shall describe, in detail, the anticipated length of delay, the precise cause or causes of delay, the measures taken by the City to prevent or minimize the delay, and the timetable by which those measures shall be implemented. The City shall adopt all reasonable measures to avoid or minimize any such delay.

11.4 Failure of the City to comply with the notice requirements and time provisions under paragraph 11.3 shall render this Section XI void and of no force and effect as to the particular incident involved. The DEQ may, at its sole discretion and in appropriate circumstances, waive in writing the notice requirements of paragraph 11.3, above.

11.5 If the parties agree that the delay or anticipated delay was beyond the control of the City, this may be so stipulated, and the parties to this Consent Order may agree upon an appropriate modification of this Consent Order. If the parties to this Consent Order are unable to reach such agreement, the dispute shall be resolved in accordance with Section X (Dispute Resolution) of this Consent Order. The burden of proving that any delay was beyond the reasonable control of the City, and that all the requirements of this Section XI have been met by the City, rests with the City.

11.6 An extension of one compliance date based upon a particular incident does not necessarily mean that the City qualifies for an extension of a subsequent compliance date

without providing proof regarding each incremental step or other requirement for which an extension is sought.

XII. GENERAL PROVISIONS

- 12.1 With respect to any violations not specifically addressed and resolved by this Consent Order, the DEQ reserves the right to pursue any other remedies to which it is entitled for any failure on the part of the City to comply with the requirements of the NREPA and its rules.
- 12.2 The DEQ and the City consent to enforcement of this Consent Order in the same manner and by the same procedures for all final orders entered pursuant to Part 31, MCL 324.3101 et seq.; and enforcement pursuant to Part 17, Michigan Environmental Protection Act, of the NREPA, MCL 324.1701 et seq.
- 12.3 This Consent Order in no way affects the City's responsibility to comply with any other applicable state, federal, or local laws or regulations.
- 12.4 The WB, at its discretion, may seek stipulated fines or statutory fines for any violation of this Consent Order. However, the WB is precluded from seeking both a stipulated fine under this Consent Order and a statutory fine for the same violation.
- 12.5 Nothing in this Consent Order is or shall be considered to affect any liability the City may have for natural resource damages caused by the City's ownership and/or operation of the facility. The State of Michigan does not waive any rights to bring an appropriate action to recover such damages to the natural resources.
- 12.6 In the event the City sells or transfers the facility, it shall advise any purchaser or transferee of the existence of this Consent Order in connection with such sale or transfer. Within 30 calendar days, the City shall also notify the WB Lansing District Supervisor, in

writing, of such sale or transfer, the identity and address of any purchaser or transferee, and confirm the fact that notice of this Consent Order has been given to the purchaser and/or transferee. The purchaser and/or transferee of this Consent Order must agree, in writing, to assume all of the obligations of this Consent Order. A copy of that agreement shall be forwarded to the WB Lansing District Supervisor within 30 days of assuming the obligations of this Consent Order.

- 12.7 The provisions of this Consent Order shall apply to and be binding upon the parties to this action, and their successors and assigns.
- 12.8 This Consent Order constitutes a civil settlement and satisfaction as to the resolution of the violations specifically addressed herein; however, it does not resolve any criminal action that may result from these same violations.

XIII. TERMINATION

- 13.1 This Consent Order shall remain in full force and effect until terminated by a written Termination Notice (TN) issued by the DEQ. Prior to issuance of a written TN, the City shall submit a request consisting of a written certification that the City has fully complied with the requirements of this Consent Order and has made payment of any fines, including stipulated penalties, required in this Consent Order. Specifically, this certification shall include:
- a. The date of compliance with each provision of the compliance program in Section III, and the date any fines or penalties were paid.
 - b. A statement that all required information has been reported to the district supervisor; and
 - c. Confirmation that all records required to be maintained pursuant to this Consent Order are being maintained at the facility.

The DEQ may also request additional relevant information. The DEQ shall not unreasonably withhold issuance of a TN.

Signatories

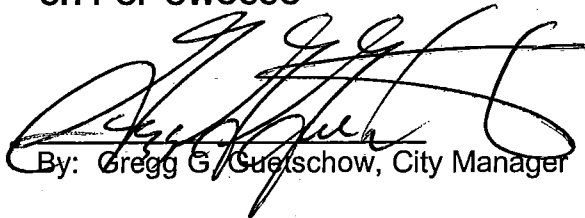
The undersigned CERTIFY they are fully authorized by the party they represent to enter into this Consent Order to comply by consent and to EXECUTE and LEGALLY BIND that party to it.

DEPARTMENT OF ENVIRONMENTAL QUALITY

Richard A. Powers, Chief
Water Bureau

Date

CITY OF OWOSSO


By: Gregg G. Guetschow, City Manager

Date

APPROVED AS TO FORM:

By: Alan F. Hoffman, Assistant Attorney General
For: Mark W. Matus
Assistant Attorney General in Charge
Environment, Natural Resources, and Agriculture Division
Michigan Department of Attorney General

Date

Appendix

3

RESOLUTION NO. 52-2025

**SPECIFIC CAPITAL IMPROVEMENT PLAN OPTION:
WATER AND SEWER RATE SCHEDULE
FOR THE CITY FISCAL YEARS BEGINNING JULY 1, 2025 THROUGH JUNE 30, 2030**

"Pursuant to Sections 34-248. Water Rates, and 34-249. Sewer Rates, of Article V, of Chapter 34, of the Owosso City Code, the City Council does hereby resolve that the revised rate schedule for water and sewer service shall be in effect for the City fiscal years 2025-26 through 2029-30 and continuing thereafter until modified or replaced by further Council action. Bills issued with a nominal bill date of June 30th, covering the quarter from April to June, shall be billed under the previous rate schedule. Rates for future fiscal years will become effective on July 1st of the fiscal year noted. All previous resolutions or parts thereof, insofar as the same may be in conflict herewith, are hereby repealed following the effective date of this schedule."

I. QUARTERLY WATER AND SEWER RATES

In-town quarterly water service charges consist of: a demand charge based on water meter size, a capital charge dedicated for water main replacement, and a metered usage charge (see tables below for appropriate fiscal year). One meter unit is equal to 100 cubic feet of water or about 750 gallons. Rates for retail out-of-town water service are double the in-town rate, except that the capital charge does not apply to out-of-town customers where the respective Township separately finances water main replacement. Twenty five percent of the out-of-town revenue is collected for and transferred to the respective Township for use in replacing and improving their water distribution system.

Quarterly sewer charges consist of a demand charge based on the water meter size (see table below) and a sewer usage charge based on metered water consumption. The City has no retail out-of-town sewer service.

Bills are issued on a quarterly basis and, if not paid by the due date as shown on the billing, a late payment charge of ten percent (10%) of the current amount due may be added for failure to make prompt payment.

A. POTABLE WATER SERVICE

QUARTERLY WATER SERVICE CHARGES CONSIST OF:

In-town: In-town Water Usage Charge – charged per meter unit
 In-town Water Demand Charge – based on water meter size
 + Capital Charge – based on water meter size

 TOTAL IN-TOWN QUARTERLY WATER SERVICE CHARGES

Out-of-town: Out-of-town Water Usage Charge - charged per meter unit
 + Out-of-town Water Demand Charge – based on water meter size

 TOTAL OUT-OF-TOWN QUARTERLY WATER SERVICE CHARGES

Consult the chart below from the appropriate fiscal year to determine applicable charges:

WATER SERVICE CHARGES FOR FISCAL YEAR JULY 1, 2025 - JUNE 30, 2026

Meter Size	In-town Usage	In-town Demand	In-town Capital	Out-of-town Usage	Out-of-town Demand
5/8"	\$4.14	\$53.94	\$35.51	\$8.28	\$107.87
3/4"	\$4.14	\$80.91	\$53.28	\$8.28	\$161.81

WATER SERVICE CHARGES FOR FISCAL YEAR JULY 1, 2025 - JUNE 30, 2026 (cont.)

Meter Size	In-town Usage	In-town Demand	In-town Capital	Out-of-town Usage	Out-of-town Demand
1"	\$4.14	\$134.84	\$88.80	\$8.28	\$269.68
1.5"	\$4.14	\$269.68	\$177.59	\$8.28	\$539.36
2"	\$4.14	\$431.50	\$284.15	\$8.28	\$862.98
3"	\$4.14	\$809.04	\$532.78	\$8.28	\$1,618.09
4"	\$4.14	\$1,348.40	\$887.98	\$8.28	\$2,696.81
6"	\$4.14	\$2,696.81	\$1,775.95	\$8.28	\$5,393.62
8"	\$4.14	\$4,315.20	\$2,841.09	\$8.28	\$8,629.41
10"	\$4.14	\$6,203.10	\$4,084.06	\$8.28	\$12,404.77
12"	\$4.14	\$11,597.10	\$7,635.42	\$8.28	\$23,191.53

WATER SERVICE CHARGES FOR FISCAL YEAR JULY 1, 2026 - JUNE 30, 2027

Meter Size	In-town Usage	In-town Demand	In-town Capital	Out-of-town Usage	Out-of-town Demand
5/8"	\$5.14	\$66.89	\$44.04	\$10.27	\$133.76
3/4"	\$5.14	\$100.33	\$66.07	\$10.27	\$200.64
1"	\$5.14	\$167.20	\$110.11	\$10.27	\$334.40
1.5"	\$5.14	\$334.40	\$220.22	\$10.27	\$668.81
2"	\$5.14	\$535.05	\$352.34	\$10.27	\$1,070.09
3"	\$5.14	\$1,003.21	\$660.65	\$10.27	\$2,006.43
4"	\$5.14	\$1,672.02	\$1,101.09	\$10.27	\$3,344.05
6"	\$5.14	\$3,344.05	\$2,202.18	\$10.27	\$6,688.08
8"	\$5.14	\$5,350.85	\$3,522.95	\$10.27	\$10,700.47
10"	\$5.14	\$7,691.84	\$5,064.24	\$10.27	\$15,381.92
12"	\$5.14	\$14,380.40	\$9,467.93	\$10.27	\$28,757.50

WATER SERVICE CHARGES FOR FISCAL YEAR JULY 1, 2027 - JUNE 30, 2028

Meter Size	In-town Usage	In-town Demand	In-town Capital	Out-of-town Usage	Out-of-town Demand
5/8"	\$5.75	\$74.91	\$49.32	\$11.50	\$149.81
3/4"	\$5.75	\$112.37	\$74.00	\$11.50	\$224.72
1"	\$5.75	\$187.26	\$123.32	\$11.50	\$374.52
1.5"	\$5.75	\$374.52	\$246.64	\$11.50	\$749.07
2"	\$5.75	\$599.26	\$394.62	\$11.50	\$1,198.50
3"	\$5.75	\$1,123.59	\$739.92	\$11.50	\$2,247.20
4"	\$5.75	\$1,872.66	\$1,233.22	\$11.50	\$3,745.34
6"	\$5.75	\$3,745.34	\$2,466.44	\$11.50	\$7,490.65
8"	\$5.75	\$5,992.95	\$3,945.70	\$11.50	\$11,984.52
10"	\$5.75	\$8,614.87	\$5,671.95	\$11.50	\$17,227.75
12"	\$5.75	\$16,106.05	\$10,604.08	\$11.50	\$32,208.40

WATER SERVICE CHARGES FOR FISCAL YEAR JULY 1, 2028 - JUNE 30, 2029

Meter Size	In-town Usage	In-town Demand	In-town Capital	Out-of-town Usage	Out-of-town Demand
5/8"	\$6.44	\$83.90	\$55.24	\$12.88	\$167.78
3/4"	\$6.44	\$125.85	\$82.88	\$12.88	\$251.68
1"	\$6.44	\$209.73	\$138.12	\$12.88	\$419.47
1.5"	\$6.44	\$419.47	\$276.24	\$12.88	\$838.96
2"	\$6.44	\$671.17	\$441.98	\$12.88	\$1,342.32
3"	\$6.44	\$1,258.42	\$828.71	\$12.88	\$2,516.87
4"	\$6.44	\$2,097.38	\$1,381.21	\$12.88	\$4,194.78
6"	\$6.44	\$4,194.78	\$2,762.42	\$12.88	\$8,389.53
8"	\$6.44	\$6,712.10	\$4,419.19	\$12.88	\$13,422.66
10"	\$6.44	\$9,648.65	\$6,352.58	\$12.88	\$19,295.08
12"	\$6.44	\$18,038.78	\$11,876.57	\$12.88	\$36,073.41

WATER SERVICE CHARGES FOR FISCAL YEAR JULY 1, 2029 - JUNE 30, 2030

Meter Size	In-town Usage	In-town Demand	In-town Capital	Out-of-town Usage	Out-of-town Demand
5/8"	\$6.64	\$86.42	\$56.90	\$13.27	\$172.82
3/4"	\$6.64	\$129.63	\$85.37	\$13.27	\$259.24
1"	\$6.64	\$216.03	\$142.26	\$13.27	\$432.05
1.5"	\$6.64	\$432.05	\$284.52	\$13.27	\$864.12
2"	\$6.64	\$691.31	\$455.24	\$13.27	\$1,382.59
3"	\$6.64	\$1,296.18	\$853.57	\$13.27	\$2,592.37
4"	\$6.64	\$2,160.30	\$1,422.64	\$13.27	\$4,320.62
6"	\$6.64	\$4,320.62	\$2,845.29	\$13.27	\$8,641.22
8"	\$6.64	\$6,913.47	\$4,551.76	\$13.27	\$13,825.34
10"	\$6.64	\$9,938.11	\$6,543.16	\$13.27	\$19,873.93
12"	\$6.64	\$18,579.94	\$12,232.86	\$13.27	\$37,155.61

For a residential user with a second 3/4" meter on a single service line for water only irrigation service, the user shall be charged a single water demand and capital charge for a 3/4" meter as a separate/additional metered service on a year round basis.

The demand charge for multiple residential units served by a single water meter shall be based on actual meter size provided the meter meets the minimum size requirement. See table in WATER AND SEWER CONNECTION CHARGE POLICIES.

B. SEWER SERVICE

QUARTERLY SEWER SERVICE CHARGES CONSIST OF:

$$\begin{array}{r}
 \text{Sewer Usage Charge – charged per meter unit} \\
 + \text{ Sewer Demand Charge – based on water meter size} \\
 \hline
 \text{TOTAL QUARTERLY SEWER SERVICE CHARGES}
 \end{array}$$

or

For residential customers without metered water service,
the quarterly sewer charge shall be the following per residential unit:

**Quarterly sewer service charge –
No water**

2025-26	\$203.21
2026-27	\$256.05
2027-28	\$322.62
2028-29	\$335.53
2029-30	\$348.95

Consult the chart below from the appropriate fiscal year to determine applicable charges for
Sewer Service charges based on water meter size:

SEWER SERVICE CHARGES FOR FISCAL YEAR JULY 1, 2025 - JUNE 30, 2026		
Meter Size	Usage	Demand
5/8"	\$6.43	\$53.21
3/4"	\$6.43	\$79.82
1"	\$6.43	\$133.03
1.5"	\$6.43	\$266.05
2"	\$6.43	\$425.68
3"	\$6.43	\$798.15
4"	\$6.43	\$1,330.25
6"	\$6.43	\$2,660.49
8"	\$6.43	\$4,256.78
10"	\$6.43	\$6,119.13
12"	\$6.43	\$11,440.11

SEWER SERVICE CHARGES FOR FISCAL YEAR JULY 1, 2026 - JUNE 30, 2027		
Meter Size	Usage	Demand
5/8"	\$8.10	\$67.04
3/4"	\$8.10	\$100.57
1"	\$8.10	\$167.62
1.5"	\$8.10	\$335.22
2"	\$8.10	\$536.35
3"	\$8.10	\$1,005.67
4"	\$8.10	\$1,676.11
6"	\$8.10	\$3,352.22
8"	\$8.10	\$5,363.55
10"	\$8.10	\$7,710.10
12"	\$8.10	\$14,414.53

SEWER SERVICE CHARGES FOR FISCAL YEAR JULY 1, 2027 - JUNE 30, 2028		
Meter Size	Usage	Demand
5/8"	\$10.20	\$84.48
3/4"	\$10.20	\$126.72
1"	\$10.20	\$211.20
1.5"	\$10.20	\$422.38
2"	\$10.20	\$675.81
3"	\$10.20	\$1,267.14
4"	\$10.20	\$2,111.90
6"	\$10.20	\$4,223.79
8"	\$10.20	\$6,758.07
10"	\$10.20	\$9,714.73
12"	\$10.20	\$18,162.31

SEWER SERVICE CHARGES FOR FISCAL YEAR JULY 1, 2028 - JUNE 30, 2029		
Meter Size	Usage	Demand
5/8"	\$10.61	\$87.85
3/4"	\$10.61	\$131.79
1"	\$10.61	\$219.65
1.5"	\$10.61	\$439.27
2"	\$10.61	\$702.84
3"	\$10.61	\$1,317.82
4"	\$10.61	\$2,196.37
6"	\$10.61	\$4,392.75
8"	\$10.61	\$7,028.39
10"	\$10.61	\$10,103.32
12"	\$10.61	\$18,888.81

SEWER SERVICE CHARGES FOR FISCAL YEAR JULY 1, 2029 - JUNE 30, 2030		
Meter Size	Usage	Demand
5/8"	\$11.03	\$91.37
3/4"	\$11.03	\$137.06
1"	\$11.03	\$228.43
1.5"	\$11.03	\$456.85
2"	\$11.03	\$730.95
3"	\$11.03	\$1,370.54
4"	\$11.03	\$2,284.23
6"	\$11.03	\$4,568.46
8"	\$11.03	\$7,309.53
10"	\$11.03	\$10,507.45
12"	\$11.03	\$19,644.36

C. FIRE PROTECTION SERVICE

Consult the chart below from the current fiscal year to determine appropriate Quarterly Water Charge for Sprinkler Service:

SPRINKLER SERVICE CHARGES FOR FISCAL YEAR JULY 1, 2025 - JUNE 30, 2026			
Riser Size	In Town Demand	In Town Capital	Out of Town Demand
3	\$53.94	\$35.51	\$107.87
4	\$80.91	\$53.28	\$161.81
6	\$133.60	\$88.80	\$269.68
8	\$269.68	\$177.59	\$539.36
10	\$431.50	\$284.15	\$862.98

SPRINKLER SERVICE CHARGES FOR FISCAL YEAR JULY 1, 2026 - JUNE 30, 2027			
Riser Size	In Town Demand	In Town Capital	Out of Town Demand
3	\$66.89	\$44.04	\$133.76
4	\$100.33	\$66.07	\$200.64
6	\$165.66	\$110.11	\$334.40
8	\$334.40	\$220.22	\$668.81
10	\$535.05	\$352.34	\$1,070.09

SPRINKLER SERVICE CHARGES FOR FISCAL YEAR JULY 1, 2027 - JUNE 30, 2028			
Riser Size	In Town Demand	In Town Capital	Out of Town Demand
3	\$74.91	\$49.32	\$149.81
4	\$112.37	\$74.00	\$224.72
6	\$185.54	\$123.32	\$374.52
8	\$374.52	\$246.64	\$749.07
10	\$599.26	\$394.62	\$1,198.50

SPRINKLER SERVICE CHARGES FOR FISCAL YEAR JULY 1, 2028 - JUNE 30, 2029			
Riser Size	In Town Demand	In Town Capital	Out of Town Demand
3	\$83.90	\$55.24	\$167.78
4	\$125.85	\$82.88	\$251.68
6	\$207.81	\$138.12	\$419.47
8	\$419.47	\$276.24	\$838.96
10	\$671.17	\$441.98	\$1,342.32

SPRINKLER SERVICE CHARGES FOR FISCAL YEAR JULY 1, 2029 - JUNE 30, 2030			
Riser Size	In Town Demand	In Town Capital	Out of Town Demand
3	\$86.42	\$56.90	\$172.82
4	\$129.63	\$85.37	\$259.24
6	\$214.04	\$142.26	\$432.05
8	\$432.05	\$284.52	\$864.12
10	\$691.31	\$455.24	\$1,382.59

II. HYDRANT RENTAL CHARGES

Hydrants located outside the City of Owosso and private hydrants maintained by the City of Owosso shall be subject to an annual hydrant rental charge of \$170.00.

III. BULK WATER CHARGES

For users with an active city water service connection, bulk water delivered by the city from hydrants or other approved outlets for such purposes as pool filling, shall be charged at the standard metered usage rate given in Section I. above along with actual labor and equipment costs with a minimum charge of \$120.00.

Other bulk water sales, such as filling tank trucks, shall be charged at the rate of \$24.00 per thousand gallons with a \$120.00 minimum charge, which includes up to 5,000 gallons, if during the normal workday at an established city delivery point. After hours bulk water sales and/or sales at other than established city delivery points, shall be charged at the rate of \$24.00 per thousand gallons plus actual labor and equipment costs.

For customers who do not prepay a \$100 service charge shall apply for invoicing.

(Note: These charges do not apply to water supplied for fire fighting).

**IV. INCREMENTAL WATER AND SEWER USAGE CHARGES FOR BILLING
ADJUSTMENTS RELATED TO PLUMBING LEAKS**

The incremental water and sewer usage charges shall be 50% of the normal usage charge. These incremental usage rates are for the purpose of making adjustments to significantly high bills attributable to plumbing leaks and may be applied in accordance with Guidelines separately approved by the Owosso City Council.

V. EXTRA STRENGTH WASTEWATER SURCHARGES

Extra strength wastewater surcharges shall apply to those users of the City wastewater treatment system approved for the discharge of extra strength wastewater in accordance with Section 34-170. of the Owosso City Code. The surcharge rate shall be applied to loadings in excess of the base or normal strength loading.

EXTRA STRENGTH WASTEWATER SURCHARGE SCHEDULE

<u>PARAMETER</u>	<u>BASE</u>	<u>SURCHARGE</u>
BOD-5	220 MG/L	\$0.24/pound in excess of base
TSS	300 MG/L	\$0.38/pound in excess of base
TP	10 MG/L	\$3.16/pound in excess of base
NH3-N	20 MG/L	\$1.69/pound in excess of base

(Note: BOD-5 = Biochemical Oxygen Demand; TSS = Total Suspended Solids; TP = Total Phosphorous; NH3-N = Ammonia Nitrogen; MG/L = Milligrams per Liter)."

I hereby certify that the foregoing document is a true and complete copy of a resolution authorized by the Owosso City Council at the regular meeting of May 7, 2025.


Amy K. Kirkland, City Clerk

